

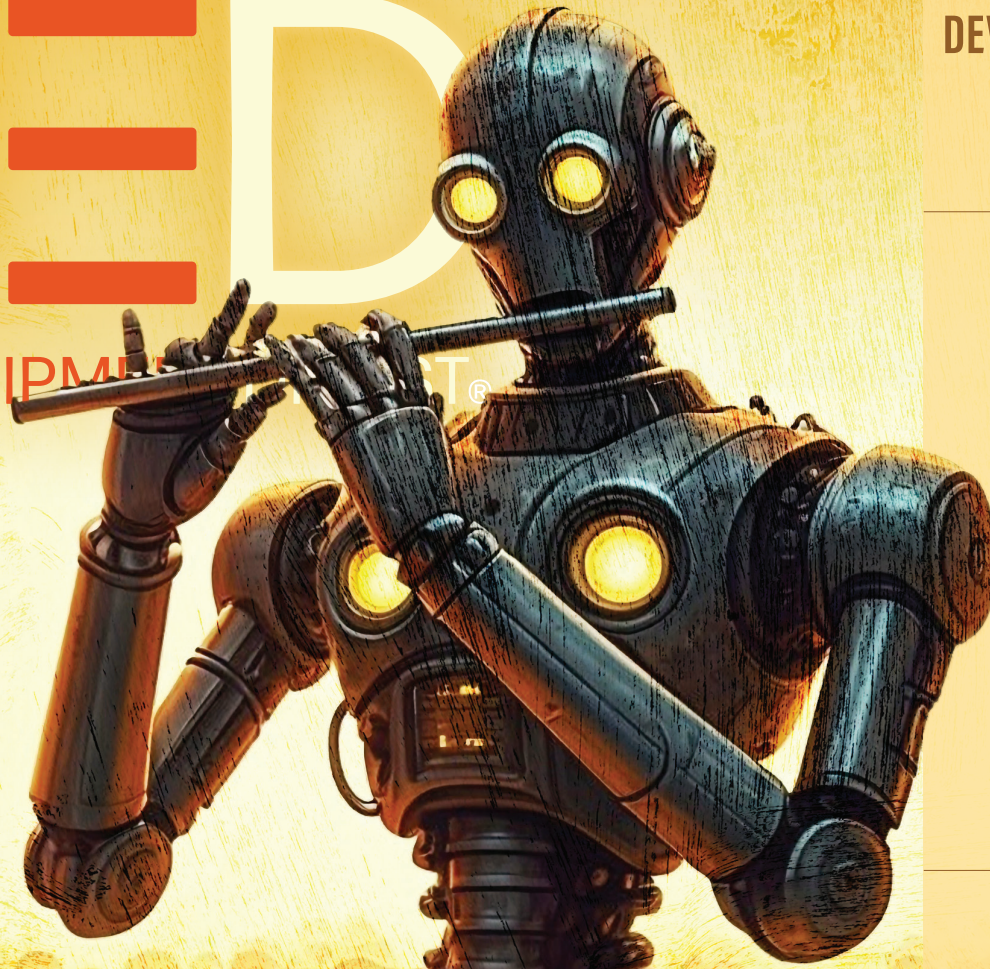
MARCH

2025

PRODUCTS FOR INDUSTRY

NEED

NEW EQUIPMENT



Mind AND Machine

Manufacturing
Follows AI's Lead

8

THE TRENDS ISSUE

TECHNOLOGY TOOLBOX

HOW MATERIAL HANDLING DEVELOPMENTS LIFT EXPECTATIONS

10

TRADE SHOW COVERAGE



Material handling product debuts
from ProMat 2025.

14

BONUS SECTION

MH&L Material
Handling
& Logistics

Navigating Supply Chain Disruptions:
Then and Now

18

FEATURED PRODUCTS



Efficient Deburring
of Small Bores

22



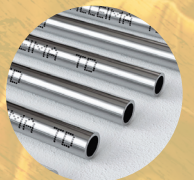
Let Your Hoses
Rotate Freely

26



Live Stream Your
Operations

29



The Ultimate Heat
Protection

33

ALH

aignerlabelholder.com

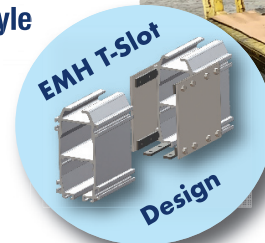
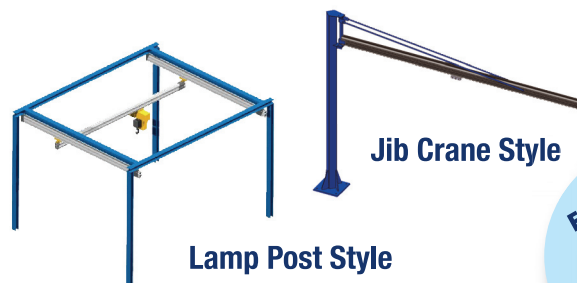


YOUR WORKSTATION & FREESTANDING CRANE SOLUTION SOURCE... LOADS FROM 25 LBS. TO 20 TONS

Why AL SYSTEMS™ Workstation Cranes Work Better

With light weight track profiles and an exclusive EMH T-Slot design, AL Systems safely and efficiently handle a wide variety of lifters and handling devices. They are also easily configured to suit almost any application need. Plus, because the rail sections are surface treated and anodized, AL Systems Workstation Cranes are virtually maintenance-free.

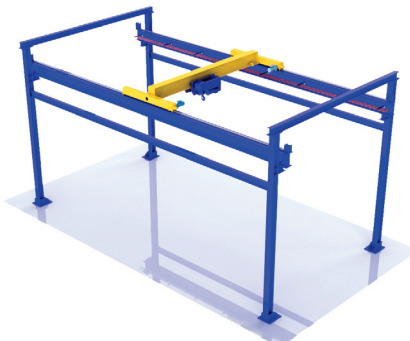
AL SYSTEMS Workstation Cranes are ideal for lighter weight installations, from 25 lbs up to 2,200 lbs. Also, ask about new AL-1 lightweight aluminum rails with capacities up to 500 lbs.



Why NOMAD® Free Standing Cranes Are Better Solutions

When manufacturing needs change, crane needs may change as well. Don't lock in your decision for crane location into a building structure. Modular NOMAD® Freestanding Crane Systems are also perfect solutions when overhead crane installation is either difficult or impractical. With bolted assembly, the NOMAD is easily dismantled, relocated and reassembled.

NOMAD® Freestanding Cranes easily handle capacities up to 10 tons. For even more capacity, up to 20 tons and 60-foot spans, ask about new NOMAD® XW Freestanding Cranes.



ProMat Booth #S2784

550 Crane Drive
Valley City, OH 44280
Tel: 1-330-220-8600 Ext. 225
Email: info@emhcranes.com

E·M·H®
Engineered Material Handling

New Equipment Digest

2 Summit Park Drive, Suite 300
Independence, OH 44131
(234) 466-0200

www.newequipment.com

Laura Davis | Editor-in-Chief

(815) 348-9052 • LDavis@endeavorB2B.com
Alexis Gajewski | Senior Content Strategist
(630) 454-7044 • AGajewski@endeavorB2B.com

Thomas Wilk | Group Editor

(630) 454-7012 • TWilk@endeavorB2B.com

Michael Annino | Art Director

MAnnino@endeavorB2B.com

CEO | **Chris Ferrell**

COO | **Patrick Rains**

CRO | **Paul Andrews**

CALO | **Tracy Kane**

CDO | **Jacque Niemiec**

CMO | **Amanda Landsaw**

VP & Group Publisher, Manufacturing | **John DiPaola**



New Equipment Digest is published 4 times per year (March, June, September, December) by Endeavor Business Media, LLC, 30 Burton Hills Blvd, Ste. 185, Nashville, TN 37215. Postage paid at Fort Atkinson, WI, and additional mailing offices. **POSTMASTER:** Send address changes to New Equipment Digest, PO Box 3257, Northbrook, IL 60065-3257. **SUBSCRIPTIONS:** Publisher reserves the right to reject non-qualified subscriptions. Subscription prices: U.S. (\$87.50 per year); Canada/Mexico (\$113.75 per year); All other countries (\$138.75 per year). All subscriptions are payable in U.S. funds. Send subscription inquiries to New Equipment Digest, PO Box 3257, Northbrook, IL 60065-3257. Customer service can be reached toll-free at 877-382-9187 or at newequipmentdigest@omeda.com for magazine subscription assistance or questions.

Printed in the USA. Copyright 2025 Endeavor Business Media, LLC. All rights reserved. No part of this publication may be reproduced or transmitted in any form or by any means, electronic or mechanical, including photocopies, recordings, or any information storage or retrieval system without permission from the publisher. Endeavor Business Media, LLC does not assume and hereby disclaims any liability to any person or company for any loss or damage caused by errors or omissions in the material herein, regardless of whether such errors result from negligence, accident, or any other cause whatsoever. The views and opinions in the articles herein are not to be taken as official expressions of the publishers, unless so stated. The publishers do not warrant either expressly or by implication, the factual accuracy of the articles herein, nor do they so warrant any views or opinions by the authors of said articles.

TABLE OF CONTENTS

VOLUME 90 • ISSUE 1 | NEWEQUIPMENT.COM

[TWITTER.COM/NEWEQUIPMENT](https://twitter.com/NEWEQUIPMENT)

[FACEBOOK.COM/NEWEQUIPMENT](https://facebook.com/NEWEQUIPMENT)

COVER STORY



Editor's Choice	4
New Sources	6
Cover Story	8
Technology Toolbox	10
ProMat Debuts	14
MH&L	18
Product Express	31
Product Guide	32
Ad Index	32
From the Editor	33
Checklist	34

PRODUCT SPOTLIGHT

p 23



LMI Pumps' TD Series of chemical metering pumps are offered in three models, from basic to comprehensive to provide you with the control and flexibility you need.

p 25



OMTech's FC-22 and FC-22C metal laser cutters are compact, offer 1,500 W of laser power for various metals, have a fully enclosed structure, and have built-in water chillers.

p 28



Cincinnati Test Systems' Sentinel IX5 leak test platform offers 9 test methods that can be combined and automatically adjusts for changes in temp, pressure, and more.

p 32



DENIOS' line of non-sparking tools offers screwdrivers, wrenches, sockets, crowbars, pliers, and more that reduce the risk of igniting fires or explosions in hazardous environments.

WHEN PRECISION MATTERS.



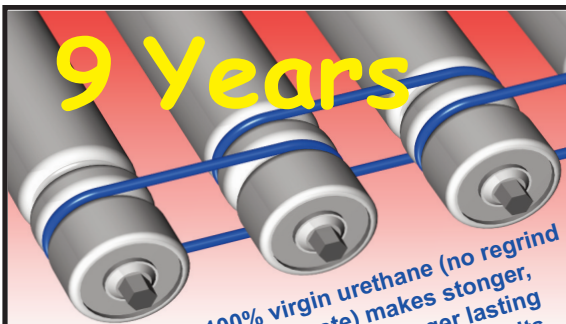
REQUEST YOUR FREE 2025
Catalog & Calendar

(800)-WASHERS | bokers.com



STAMPING & WASHER SPECIALISTS SINCE 1919

9 Years



LONG-LIFE BELTS MOVE HEAVY LOADS

When a competitor's belts failed after only nine months service in a large postal distribution center, Dura-Belt's **Long-Life HT belts** replaced them. **Nine years** later, HT belts are still going strong -- moving your mail on conveyors that run 24 hours/day, 7 days/week.

Even though some postal tubs have soft bottoms and carry over-weight loads, HT belts take the punishment and keep the mail moving. Over **120 million** are in service on powered-roller conveyor systems. For longer-life and heavier loads, try time-tested HT (high tension) O-ring belts -- the only ones colored **"Post Office Blue"**.

Dura-Belt 800-770-2358 614-777-0295
Fax: 614-777-9448 www.durabelt.com



SELF POWERED ENGINE DIGITAL TACH/MAINTENANCE HOUR METER PT17 SERIES

Enm Company introduces the new series PT17 self-powered Digital tach/Maintenance/Hour meter with a replaceable battery. The PT17 keeps track off true engine RPM and running time for all types of Gasoline engines. The unit is powered by an internal lithium battery. There are no external power connections required.

customerservice@enmco.com

TOLL FREE: 888-372-0465 www.enmco.com

MADE IN THE USA
ENM
Counting Instruments



AI Tablet for Fieldwork

The **ZX10** 10-in rugged Android tablet combines a lightweight design with AI performance. It supports advanced AI capabilities and delivers good performance even at low power levels. It also provides lightning-fast data transfer and up to 256GB of Universal Flash Storage for running multiple applications simultaneously. Its sunlight-readable technology and capacitive multitouch display let you keep operating in the rain or while wearing gloves. It includes dual SIM technology for network coverage, while Wi-Fi 6E, Bluetooth 5.2, and optional dual-band GPS offer fast data transfer and location capabilities.

Getac Technology Corp.

More online: newequipment.com/55261302



Powerful Remote IIoT Machine Monitoring

Ewon Cloud and **Ewon Edge** strengthen industrial remote connectivity, delivering scalable, secure connectivity for large fleets of machines. Ewon Cloud and Ewon Edge are designed to meet the demands of large-scale machine operations, providing industrial users with secure access to machines and simplified user access management. Once an Ewon Edge device is installed, it registers with Ewon Cloud, integrating machines into a unified “space” where an unlimited number of devices can be grouped. With flexible access control, users can securely monitor and manage machine data anytime, from anywhere.

HMS Industrial Networks

More online: newequipment.com/55264108



Direct-to-Package, Entry-Level Printer

An entry-level digital printer that streamlines packaging and paper bag production, the **MULTI 800** provides flexible, direct-to-package printing across many materials. It’s Industry 4.0-ready and uses eco-conscious water-based printing. With an automatic suction-cup feeder, it precisely prints on items of varying sizes and thicknesses, from small paper bags to larger, bulkier items. It offers print speeds up to 88 ft/min (27 m/min) with print dimensions of 17 x 8 in (430 x 200 mm). It can be used for corrugated cardboard, die-cut boxes, wooden packaging, food packaging, bottles, paper cups, and more.

AstroNova, Inc.

More online: newequipment.com/55259773



Material Provides Cut and Flame Resistance

AeroDex FR is a comfortable, patent-pending, cut-resistant FR technology that brings flame-resistant PPE into the 21st century. Flexible and cut-resistant, Magid combined AeroDex with the space-age materials used to make sturdy, life-saving items such as bullet-proof vests, to create AeroDex FR. Lighter and thinner compared to other cut-resistant aramid materials, AeroDex FR is engineered to feel cooler. The cut and impact-resistant gloves provide dexterity and tactile sensitivity with ANSI A6 cut protection. A foam neoprene palm coating provides contact heat and flame resistance without sacrificing grip in dry, oily, and wet conditions.

Magid Glove & Safety Manufacturing Company LLC

More online: newequipment.com/55265288

Strip Discs Extended Life for Steels

Tiger Ceramic and **Tiger Silicon Carbide non-woven strip discs** remove coatings and rust in preparation for welding and manufacturing operations. Tiger Ceramic strip discs have self-sharpening ceramic grains that easily clean welds and remove thick coatings and stubborn rust, maintaining a consistent cut rate for greater efficiency. Tiger SiC strip discs provide a high initial cut and penetration, making them ideal for cleaning hard surfaces such as hard-grade steel, structural steel, hot-rolled steel, and stainless steel.

Weiler Abrasives

More online: newequipment.com/55265723



Easily Test Advanced Polymers

Designed for versatility, speed, and ease of use for precise tensile and fatigue testing of high-performance and lightweight polymers and composites, the **ElectroForce Apex 1 Mechanical Testing Instrument** provides precise, safe, and reliable testing to inform material selection and design. The increased motor stroke range speeds up testing and makes it easy to perform monotonic and fatigue testing across a larger variety of materials. Integrated TuneIQ technology automatically tunes the instrument without operator intervention. The motor control system improves break-stop capabilities during testing, letting operators run longer experiments overnight, unsupervised.

TA Instruments

More online: newequipment.com/55265649



GEN4[®] Static Eliminators Remove Static Electricity and Dust!

Improved Performance and Greater Durability!

Prevent Shocks, Jamming, Tearing and Static Cling!

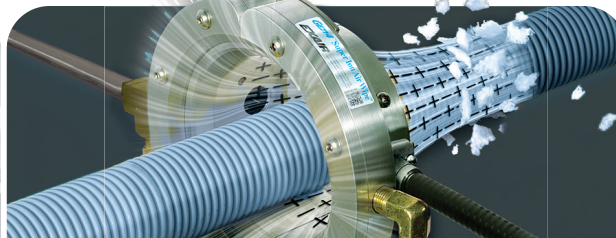
As humidity decreases, static electricity problems will increase.

- Materials tear, jam or curl
- Webs and films cling to themselves
- Electronic sensors fail, making false readings
- Hazardous sparks or shocks occur
- Product clings to itself, rollers and machine beds
- Dust attraction ruins surface finishes



GEN4[®] Super Ion Air Knife[™]

Produces a laminar sheet of airflow that floods an area or surface with static eliminating ions.



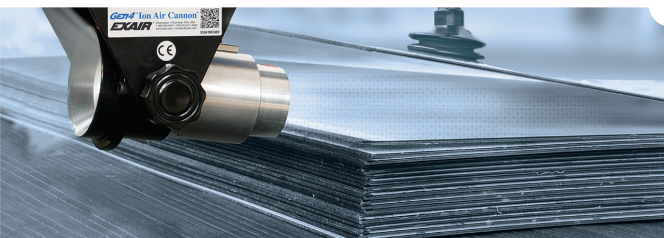
GEN4[®] Super Ion Air Wipe[™]

The uniform 360° ionized airstream neutralizes and cleans continuously moving surfaces.



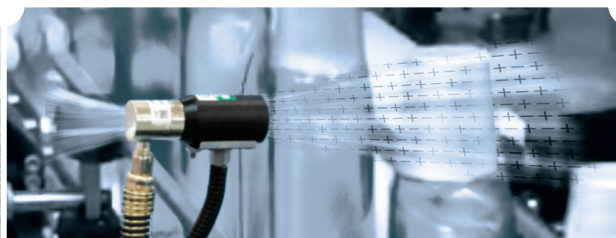
GEN4[®] Ion Air Gun[™]

Eliminates static and dust from parts prior to assembly, packaging, painting or finishing.



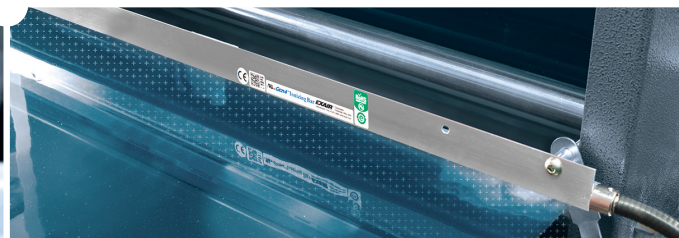
GEN4[®] Ion Air Cannon[™]

Ideal for hard to reach spaces or confined areas that require a concentrated ionized flow.



GEN4[®] Ion Air Jet[™]

Delivers a concentrated blast of ionized air prior to shrink wrapping, packaging and printing.



GEN4[®] Ionizing Bars

Eliminates static cling, dust attraction and jamming on paper, plastics and film.



Intellistat[®] Ion Air Gun

Patented handheld static elimination for sterile environments.

LEARN MORE ABOUT OUR
INDUSTRIAL STATIC ELIMINATORS NOW!

https://exair.co/61_470



Intellistat[®] Ion Air Nozzle

A mountable static elimination nozzle for assembly stations.



Gas Density Monitor for Indoors/Outdoors

The **8719 Gas Density Monitor**, designed to enhance gas-insulated switchgear monitoring in the utilities, renewable energy, and manufacturing industries, offers a large 3-in (75 mm) dial to provide easier needle readability for estimating exact levels. Featuring up to 5 galvanically separated circuits, it allows for independent monitoring of multiple density levels and enhanced alarm capabilities. With exact switching output and temperature immunity, it provides reliable alarm triggering regardless of the conditions and can be used both indoors and outdoors.

Trafag, Inc.

More online: newequipment.com/55265779



AI Vision Software for Legacy Systems

Easily add AI inspection capabilities to existing vision inspection systems rather than replacing cameras and infrastructure with **Vision Link** software. It connects to any camera system that supports FTP output, including line scan, microscope, X-ray, hyperspectral, thermal, and area scan models from Cognex, Keyence, and others. Supporting up to 8 cameras at once and delivering real-time inference with sub-250 ms processing, the solution is for manufacturers wanting AI benefits without infrastructure changes, reduced manual inspections, and reduced false-positive rates and low accuracy.

Elementary

More online: newequipment.com/55268775



Low-Profile, Portable Refrigeration

FlexiCool ProBox is a portable cooling unit for the refrigeration needs of various industries. For temporary and permanent refrigeration setups, the prebuilt unit allows for rapid deployment with setup taking only one day. The threshold minimizes gaps, reducing air exchange between the cooler and the outside. It includes removable forklift holes for easy unloading and reversible exterior trims can be flipped to serve as anchors, securing the unit to the ground. Lockable wheels secure the unit when stationary while allowing for easy relocation when needed.

Amerikooler

More online: newequipment.com/55264083



Scalable Energy Cabinet

TRENE Liquid-Cooling Energy Storage System combines 125 kW of power output with a high-capacity 261 kWh energy reserve, powered by 314Ah LFP battery technology. With five battery packs per cabinet for a 261 kWh capacity, larger enterprises can scale up to 1,250 kW/2,610 kWh with 10 cabinets. It can be used for different applications, from powering manufacturing facilities and logistics centers to supporting renewable energy systems and microgrids. The SolaXCloud Platform provides updates every 10 seconds and one-year local storage, accessible through the cloud or app.

SolaX Power

More online: newequipment.com/55261285

Electrical & Mechanical Positioning Systems

Norelem's 5 new families of positioning systems include rotary tables, lifting tables, counter bearings, adapter plates, and joint heads. For electrical positioning, the **High-Load Coaxial Rotary Table** and the **Belt-Driven Rotary Table** support forces of up to 12,000 N and load capacities of up to 5,000 N, respectively. For mechanical positioning, the **Counter Bearings** compensate for misalignments, the **Adapter Plates** connect to different positioning system sizes, the **Lifting Tables with Mechanical Position Indicators** provide height adjustments in 0.1 mm increments, and the **joint head family** offers a quick-clamping system.

norelem, Inc.

More online: newequipment.com/55263792



Intelligent Environmental Monitor

AEGIS, an intelligent monitoring system for situational awareness, uses AI and modular sensor arrays to adapt to different environments—monitoring air quality, contaminants, and assembly line processes. It analyzes and combines sensor data in real time from air quality, temperature, humidity, contaminant, motion, and sound sensors to understand developing conditions and predict outcomes. It recognizes objects and shapes, classifies sounds, detects pollutants, and interprets a range of environmental data to identify threats and security breaches. Users can access live feeds and receive alerts through the AEGIS mobile app.

Nand Logic

More online: newequipment.com/55263095



ERGONOMICS CHALLENGE ACCEPTED

The only company in the world that manufactures a broad line of specialty-type material handling products - and modified or custom engineered products for specific challenges.



Reversible Boom Crane (RBC)

1,000 to 20,000 lbs capacity
14 ft height, 7 ft reach

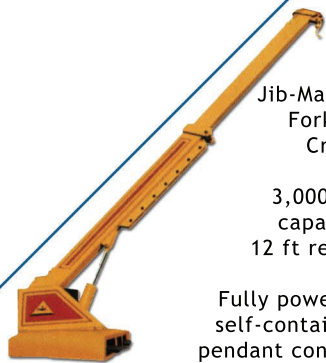
Reach above, over, and beyond!

Available powered telescopic boom, powered mast rotation, and cable winch



Zero-Low Lift Table

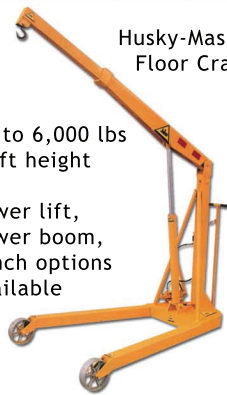
Capacities from 500 to 50,000 pounds
Deck sizes up to 72" x 192"
Lift from ground level up to 96" high



Jib-Master
Forklift
Crane

3,000 lbs
capacity
12 ft reach

Fully powered
self-contained
pendant control



Husky-Master
Floor Crane

Up to 6,000 lbs
12 ft height

Power lift,
power boom,
winch options
available



Lift Tables

Hydraulic & Mechanical
operation available
250 to 50,000 pounds



Zero-Low Dock Lift

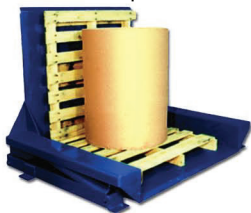
Instant loading dock!

SHOP ONLINE

www.airtechnical.com

Call toll-free
888-857-6263

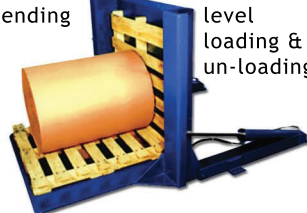
Zero-Low Upender



Up to 6,000 pounds
Smooth 90° upending



Ground
level
loading &
un-loading.



Portable Jib Crane

500 to 2,000 pounds
Up to 12 ft span
No installation required!



Tele-Mast
Straddle Crane

60,000 lbs
capacity

No hoist
required!



V-shaped deck available for coil or
roll handling - add conveyors
for easy material transfer



Crate
Positioner

Upender Inverter



Clamps and holds
securely from
250 to 50,000
pounds capacity,
smoothly and
effortlessly
rolls over 180°

Tug Master Industrial Tractor Trailer System

Self-contained powered tug tractor
pulls a variety of side-loading trailers
for streamlined material movement
through facilities



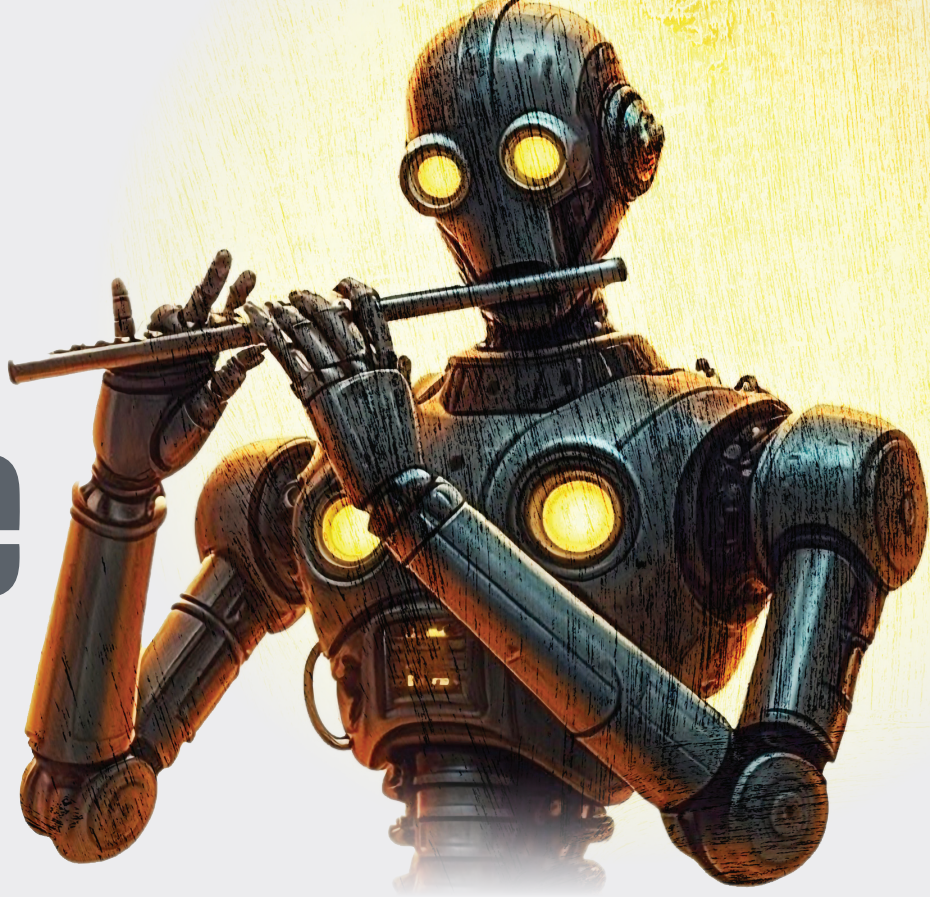
**AIR TECHNICAL
INDUSTRIES**
MANUFACTURING - INNOVATIVE
LIFTING SOLUTIONS
SINCE 1964

*Manufactured proudly
in the USA since 1964*
7501 Clover Avenue | Mentor, Ohio 44060

Mind AND Machine

Manufacturing Follows AI's Lead

By Laura Davis



Artificial intelligence (AI) will define the 2020s—exploding for every industry worldwide. Its uses offer a lot of convenience and the possibilities as we advance seem endless. The manufacturing industry has historically seen significant efficiency gains when adapting to Industry 4.0 and automation, and AI is the next step forward. Tom Coshow, a senior director analyst at Gartner, predicts that by 2028, AI agents will make 15% of day-to-day business decisions autonomously.

To understand how AI is transforming manufacturing, it's important to recognize that not all AI systems are created equal. There are three distinct types of AI making an impact on the factory floor: Traditional machine learning, Generative AI, and Agentic AI. Each offers unique capabilities that, when properly implemented, can significantly enhance manufacturing efficiency, quality, and innovation. Before diving into specific applications, let's clarify what sets these AI approaches apart and how they complement each other in modern manufacturing environments.

Understanding the Types of AI

There are a couple of terms out there that you've probably heard in relation to AI: Generative AI and Agentic AI. And they're different from each other.

Before either of these two AI types came about to the mainstream, the industry was already working with AI within machine learning. Machine learning was largely limited to predictive models, used to observe and classify patterns in content. It analyzed data to solve a specific task by using preprogrammed rules and algorithms, being used in predictive analytics, natural language processing (NLP), and autonomous systems.

Generative AI, while also able to analyze data to solve tasks, learns patterns from the data to create new content. It's the one that can create text, images, music, and models, and can mimic human work and boost creativity while saving time and effort. Chat GPT, Claude, DALL-E, and MidJourney are all Generative AI tools that pushed Generative AI mainstream.

Agentic AI on the other hand is designed to interact with its environment, make decisions, and take actions to achieve objectives autonomously, without human involvement. Generative AI on the other hand needs prompts from a human to create.

Examples of Agentic AI would be a self-driving car that navigates roads by making real-time decisions based on integrated sensors, a robotic arm that autonomously performs tasks in a warehouse, or a virtual assistant that can proactively manage a schedule. These agentic systems are fitted with sensors, algorithms, and actuators that allow them to perceive their environment, process information, and execute actions.

Agentic AI acts with a purpose, reacting to inputs and considering objectives while making choices to achieve those objectives. The AI that everyone jokes about overtaking us someday? That's Agentic AI. Its autonomy has raised questions about ethics and data accountability: Who is responsible when an autonomous system makes a mistake or goes rogue? There aren't any bumpers making sure these systems continually align with human values. This isn't lost on its developers though. They're finding ways to code stopguards into these systems to prevent the unthinkable from happening.

Another key difference lies in their objectives: Generative typically works on tasks that are narrow and well-defined while agentic often tackles broader, multistep goals that need continuous decision-making and adaptation. In other words, Generative AI generates and Agentic AI acts.

Current Applications

When combining AI with technologies such as machine learning, computer vision, and NLP, it can improve processes at a much more rapid pace than all of the other technologies combined. A huge benefit is its ability to analyze large volumes of data. That might sound unremarkable until you realize "analyzing large data volumes" means parsing through all data, recognizing patterns in that data and continually learning from it, making informed

decisions on what the data means, and spitting out a decision or a prompt on what needs to be done next—in seconds. Another big benefit is that due to these algorithms, it can adapt to changing data on the fly. This data can come from sensors, cameras, machines, robots, entire production lines, etc.

One of the areas AI is making a big impact is predictive maintenance due to its ability to analyze large datasets rapidly, saving operators valuable time otherwise spent trying to interpret complex data. By analyzing the data for them, it not only frees up time but also reduces potential human-made errors. Because of this, AI can predict or assume failures before they happen, which as we all know, drastically cuts down on downtime and maintenance, preventing costly repairs. When paired with computer vision systems, AI can offer sophisticated quality control monitoring to identify any type of defect in real time.

In manufacturing, Generative AI is particularly useful in research and development. In product development, Generative AI helps design variations of a proposed prototype. Rather than working in a 3D modeling tool, AI can help engineers realize designs faster, helping them decide on the best variations the first time around instead of spending extra time creating them all up front, freeing up design time. Basically, it's helping to automate the prototyping process. And after designing and prototyping, it can automate the testing process as well as help ensure compliance.

Use cases for the supply chain sector include tracking inventory to streamline procurement, analyzing demand forecasts, analyzing transportation routes, automating warehouses, and undertaking auditing services.

For cybersecurity, AI can be used to identify unusual patterns, flag potential vulnerabilities, and implement threat prevention without requiring constant human oversight to protect from cyberattacks. For example, an AI agent can enhance security by analyzing email metadata and user behavior to detect phishing attempts, automatically blocking suspicious content and alerting IT teams—eliminating the need for constant human monitoring.

In smart factories, agentic systems can address challenges such as bottlenecks in production, equipment downtime, and the growing demand for customized products. It creates smarter, more responsive manufacturing systems. It can also ensure the availability of raw materials while avoiding overstock issues and reducing carrying costs. Manufacturers can maintain lean inventories while meeting production schedules like a well-oiled machine.

When used in robotic assembly lines, AI enables dynamic task allocation and real-time adaptability, with systems learning from their environments and adjusting to new tasks quickly and with precision. This represents a significant advancement over traditional robots that relied solely on preprogrammed instructions, offering manufacturing systems that can adapt to changing production requirements without extensive reprogramming.

Collaborative robots (cobots) using agentic AI further the human-robot working relationship and combine human resourcefulness with AI precision to enhance productivity and safety.

Digital twin technology is increasingly using AI to enhance its simulations, allowing manufacturers to replicate and optimize production processes virtually before implementation.

With the rise in customized products, agentic AI enables manufacturers to produce customized goods at scale without compromising efficiency or precision.

For sustainability initiatives, AI helps optimize energy usage and material efficiency, supporting manufacturers' goals to achieve net-zero operations while maintaining productivity.

Integrating both generative and agentic systems together is another emerging trend. Generative and agentic systems aren't mutually exclusive but often work together to create a more powerful process. For example, an agentic system could use a generative system to help it communicate more effectively or create custom content at any time needed. This could look like an agentic system monitoring and analyzing data continuously from an entire facility to communicate operation statuses or health statuses of equipment. It could look like a development team having an agentic system run on a prototype and having the generative system propose a new design with fewer pitfalls or challenges. Or it could look like a robot in a warehouse, fitted with both types of AI, using the generative one to devise new routes for itself while the agentic system navigates those routes with ease.

Overall, AI brings unprecedented adaptability to manufacturing operations. Whether through robotic systems that learn from their environments and adjust to new tasks quickly and precisely, or through systems that can continuously monitor and optimize processes, AI enables manufacturing facilities to become more flexible, efficient, and responsive.

Challenges and Limitations

Even with all the current uses and future possibilities of AI in all its forms, it's not without its flaws—as we're all aware of. Generative AI has only been trained on so much data and will take time to learn. And it doesn't truly understand what it's creating, which is why it needs constant feedback to help it learn as it's simply predicting what might come next based on patterns it has already seen. Currently, the

modern mainstream tools for Generative AI are learning from every person who interacts with its system. But how it's really going to learn is if every person who interacts with it also gives it feedback on how it performed—right or wrong. We are all part of actively growing a technology in real time, worldwide—which is astounding.

Knowledge limitations present a significant challenge. As of now, Claude, the Generative AI tool from Anthropic, offers the most recent knowledge cutoff date of April 2024. The others are still running on knowledge bases that range from the years 2021 to 2023. Keeping these large language models (LLMs) continuously up-to-date is a very intensive process, requiring a significant amount of time and resources, which is why it's not done more frequently. This leaves models with outdated information until a new training cycle begins.

However, when using a generative system in your facility, the model is trained on your data exclusively—a smaller, more focused dataset that allows the model to easily learn faster because it encounters the same repeated operations and processes over and over again.

Data privacy and security pose another major challenge. In a world where there is increasing concern over data breaches and hacks, this is not a light matter. Despite warnings for all businesses that deal with sensitive information, proprietary or not, to implement a strengthened security system for its data, many have chosen to ignore the warnings and procrastinate on investment. While time and costs for implementing these systems aren't inexpensive, it's one of those things that's better to have than to be caught with your pants down. Manufacturing data is sensitive, and often proprietary, which requires cybersecurity measures to prevent breaches.

Workforce adoption represents a significant hurdle. As happens with adopting any new technology or system, it takes careful planning and guidance for workers to help them replace their manual tasks with automated ones. Workers will need to be trained on the new automated processes, what to do when there's a hitch in the process, and how to rectify it. Workers will need to learn to work alongside AI in harmony.

Data quality is also crucial for AI success. In line with training your workforce, you need to make sure your data is true and up to date. If your generative or agentic system is trained on outdated, biased, or incomplete data, the AI's output will offer false or subpar decisions, leading to disaster.

Cost barriers can be prohibitive, especially for smaller manufacturers. If you think cybersecurity measures carry a hefty price tag, be ready because you'll be hit twice when implementing an AI system. Given its power, its abilities, and its novelty in the industry for wide use, agentic AI systems involve significant investment in infrastructure and training, which can easily deter smaller businesses. However, many manufacturers and software developers are increasingly creating new products that are small and compact, and able to fit into existing infrastructure. After all, no one is going to want to buy or invest in a piece of equipment if it's not going to fit into existing operations without a huge overhaul.

Finally, even with perfect data and implementation, AI is not infallible. As mentioned above, AI can still make errors. While this might seem counter-intuitive, regular

monitoring is necessary to ensure agent-driven actions align with organizational goals and ethical standards.

Recommendations

Before you take the plunge and invest in AI for your manufacturing operations, make sure you have a solid plan in place for keeping track of data and updating it continually. It's a good idea to have someone on the team who is aware of all the data you own and operate with to be able to fact-check against what the AI is using. Also, this should be standard since AI, as I've mentioned already, is not fool-proof. At least not yet. Even if your data is complete and factual, the AI can still make errors. Make sure to have a regular monitoring system in place across all uses of AI in your operations and processes.

Manufacturers looking to implement AI should consider a phased approach. Start with smaller, focused applications where AI can provide immediate value with minimal disruption, such as generative systems. Predictive maintenance often serves as an excellent entry point, as it requires minimal infrastructure changes while delivering measurable returns through reduced downtime and reduced maintenance costs.

It's important to invest in workforce development early as the success of AI implementation depends heavily on your team's ability to work alongside these systems effectively. Create comprehensive training programs that not only teach technical skills but also help employees understand how AI enhances their work rather than threatens it. Building this understanding can significantly reduce resistance to adoption in the long run.

Before deploying any AI system, establish baseline performance measurements and specific goals for improvement. This data-driven approach allows you to accurately assess ROI and make informed decisions about scaling successful implementations or adjusting underperforming ones and course correct.

Consider establishing an AI governance framework within your organization, including policies for data management, ethical guidelines for AI deployment, security protocols, and clearly defined roles and responsibilities. Such a framework helps maintain control as AI applications expand throughout your operations.

Manufacturers can also look for opportunities to partner with AI solution providers, research institutions, or even other manufacturers to share knowledge and resources. Industry consortiums focused on AI in manufacturing are becoming increasingly common and can provide valuable insights and support. The field of AI is evolving rapidly, with new capabilities emerging regularly. Build flexibility into your implementation plans to take advantage of these advancements as they become available.

The journey toward AI implementation in manufacturing isn't without challenges, but with thoughtful planning, careful execution, and ongoing monitoring, the benefits far outweigh the obstacles. By starting small, focusing on data quality, investing in your workforce, and maintaining a commitment to continuous improvement, manufacturers of all sizes can harness the power of AI to drive their operations forward in the decades to come. Those who begin this journey now, learning and adapting along the way, will be best positioned to thrive in the increasingly AI-driven manufacturing landscape of tomorrow. **NED**

How Material Handling Developments Lift Expectations

By Sheila Kennedy, CMRP

The constant movement of goods and materials through industrial plants and warehouses requires reliable, nimble technology designed for safety, efficiency, and accuracy. From robots and cobots to forklifts and conveyor systems, upgraded solutions and new automation opportunities continue to emerge to strengthen material handling and intralogistics processes.

Robotic Systems

Precise robot and cobot solutions elevate material handling safety and performance. **Dynamo autonomous mobile robots (AMRs) from Addverb** transport materials and goods using natural navigation capabilities and can carry loads of up to 5,500+ lb (2,500 kg). For applications that require repetitive material movement, automated guided vehicles (AGVs) are available. A new generative AI assistant for its Zippy sorting robot AGVs facilitates their maintenance by translating verbal requests into commands understood by the AGV.

The company tailors its material handling solutions to the unique requirements of its customers. “By integrating robotics, intelligent software, and real-time data insights, we empower businesses to optimize operations, increase safety, and deliver their products to their customers more efficiently,” says Sriram Sridhar, CEO of Addverb Americas.

The new **MC600 from Mobile Industrial Robots (MIR)** unites its MiR600 AMR base with UR20/UR30 cobot arms from Universal Robots. Easy to program and



The MC600 unites the MiR600 AMR base with UR20/UR30 cobot arms from Universal Robots to automate a wide range of tasks, from material handling to assembly.

© Mobile Industrial Robots (MiR)



Forty percent smaller than other SCARA robots, the Lexium SCARA is a cost-effective option that optimizes floor space utilization, automating repetitive tasks to drive production line efficiency.

© Schneider Electric

deploy, the MC600 helps to automate workflows such as palletizing, box handling, and machine tending, including heavy payloads up to 1,322 lb (600 kg).

“These mobile cobots also include AI powered by NVIDIA Jetson, enabling intelligent 3D object detection to ensure proper pick-up of the materials as well as safety as the robot moves between its stations,” notes Kenneth Bruun Henriksen, global head of MiR Go Ecosystems. The MC600 likewise benefits workers who no longer need to strain to pick up and place heavy objects.

Lexium SCARA from Schneider Electric is a new high-speed, ultra-compact, selective compliance assembly robot arm (SCARA) designed to automate repetitive tasks in manufacturing, warehousing, material handling, and related applications. It integrates into unified machine control systems, and it can be virtually designed and tested before implementation when combined with Schneider’s EcoStruxure Machine Expert Twin digital twin solution.

“This simple, compact solution saves space, and its seamless integration saves commissioning time, while its 40% longer z-arm stroke delivers one of the largest work areas available, compared to similar products,” observes Gary Zeppetella, senior offer manager for motion and robotics offers at Schneider Electric.

Forklift Technologies

Key advancements transform forklift operations. The lithium-ion powered **E80XNL from Hyster Company** is an 8,000-lb (3,600 kg) capacity electric forklift that offers comfort, energy efficiency, and fast recharging. Compared



Shorter than usual ICE models, the E80XNL offers an improved turning radius and right-angle stack with multiple battery sizes to reach the run time needed for your task.

© Hyster Company

to lead acid batteries, the legacy electric option, lithium-ion batteries provide consistent power until depletion, require no battery maintenance, and offer a smaller, lighter form factor.

Global Product Manager Josh Eby says the Hyster E80XNL is “specifically designed to take advantage of the slimmer form factor of its lithium-ion battery pack, creating greater space in the operator compartment.” The forklift is also available with Hyster Reaction, the company’s new lift truck operator assistance system for demanding



Continental’s ContiPT18 tires feature a special tread pattern that provides excellent traction along with a multilayer construction for premium comfort.

© Continental Specialty Tires



Dynamo is a robust AMR powered by natural navigation and enables efficient and seamless material movement of up to 5,500 lb (2,500 kg).

© Addverb Technologies, Inc.

applications that supports site safety processes with forklift proximity sensors, hydraulic function control, and dynamic operator alerts.

The updated **ContiPT18 forklift tire from Continental Specialty Tires** has new tread-wear indicators visible on both sidewalls of the tire to simplify the monitoring of tread depth. The indicators help to maximize tire utilization and increase operating safety by enabling timely replacement decisions.

The tire's two-stage design promotes high mileage and low rolling resistance. "Thanks to the modern tire compounds we use, heat generation is low while wear resistance is high," observes Matthias-Stephan Müller, product manager for material handling tires at Continental Specialty Tires. Additionally, ContiPT18's specific tread pattern optimizes grip and traction, even with heavy loads.

Conveyor Belts

Advanced conveyor systems are essential in industries such as food processing. The patented **KleanTop PacTitan Pro Metal Belt from Regal Rexnord** is now available with a 5/8-in (16 mm) belt pitch option with an increased open area to reduce material build-up. Designed to last "up to six times longer" than the average metal conveyor belt, the belt has dedicated sprocket lanes to reduce bending and distortion within the belt, and it is fully reversible to address wear patterns.

"With the PacTitan Pro, teams spend less time on maintenance and repair, buy fewer replacement belts, and get more production hours out of the day," says Natalie Gray, U.S. strategic account manager for food and beverage at Regal Rexnord.

Technology Toolbox is a monthly feature by Sheila Kennedy, CMRP, that appears in our sister publication Plant Services. Email sheila@addcomm.com with products for consideration. The full Tech Toolbox library is available at: www.plantservices.com/voices/technology-toolbox. **NED**

Sheila Kennedy, CMRP, is a professional freelance writer specializing in industrial and technical topics. She established Additive Communications in 2003 to serve software, technology, and service providers in industries such as manufacturing and utilities, and became a contributing editor and Technology Toolbox columnist for Plant Services in 2004. Prior to Additive Communications, she had 11 years of experience implementing industrial information systems. Kennedy earned her B.S. at Purdue University and her MBA at the University of Phoenix.

Sound Solutions Since the 1970s

Since 1972, Floyd Bell Inc has been providing solutions for audible alarms. We're now the industry leader in alarm technology, expanding into LED alerts, voice-capable products, combination components and CAN technology.



- Durable Piezoelectric Alarms
- Bright LED Panel Indicators
- Combination Light/Alarm Components
- Programmable Speaker Products

CAN-96-930-H
J1939 CAN-Ready
Piezo Alarm

Made in the USA



View our complete line of products at FloydBell.com

or call

888-Floyd-Bell



Floyd Bell Inc
SOUND SOLUTIONS

Hamilton | Leader in Industrial Casters, Wheels, Carts & Trailers

Hamilton Caster is a trusted leader in heavy-duty material handling solutions, specializing in industrial casters, wheels, carts, and trailers. For over a century, we've built products renowned for their unmatched strength, durability, and performance in demanding industries like aerospace, automotive, and heavy manufacturing.

We offer one of the most comprehensive lines of industrial casters, from 300-lb. models to our Ultra Maxi-Duty line, rated up to 43,000 lbs. Our in-plant trailers can be custom-engineered to handle loads up to 50 tons. Need a quick turnaround? Thousands of casters and wheels are stocked and available for 24-48 Hour PRONTO® Shipment, with free CAD models available for easy integration into your designs.

Every product, from Spinfinity® casters to Hercules trailers, is built in the USA and rigorously tested to handle the toughest jobs. Whether you need a standard solution or a custom-engineered design, our team works closely with you to develop solutions that keep operations running smoothly. From concept to completion, we deliver not just the toughest products on the planet but solutions that power your business forward.



Colossus: Engineering Heavy-Duty Innovation | 200-Ton Toting Casters

When extreme loads demand extreme solutions, Hamilton delivers. Meet the Colossus—our largest and most powerful caster to date, designed to carry an astonishing 200 tons. Built for a federal contractor, this engineering feat consists of four casters, each rated for 100,000 lbs. Fully assembled, each caster stands 52 inches above the factory floor and weighs over 8,000 lbs.

Colossus casters feature a spring-loaded suspension system to absorb shock, massive flame-hardened to 55-60 HRC raceways, and (96) 1.5-inch diameter ball bearings for smooth movement under intense loads. To ensure superior control, each caster includes an eight-position swivel lock, a 7-inch diameter oscillating axle to navigate uneven surfaces, and a foot-operated braking system. The massive payload required 36-inch diameter, 20-inch-wide extreme-duty press-on tires with 4.5-inch diameter tapered roller bearings. Hamilton's Carts & Trailer Division also engineered a custom 4,500-lb. towing system for precision maneuverability.



Meet the Swiss Army Knife of Workplace Safety—Hamilton's All-New Field Installable Toe Guard

Safety and flexibility come standard with Hamilton's Field Installable Toe Guard, designed to protect workers and enhance operational efficiency. Built from rugged 3/16" steel with a sleek platinum gray finish, it installs easily—no drilling or modifications required.

But this isn't just any toe guard—it's a multi-functional upgrade for enhanced workplace safety. It accommodates heavy-duty contact and ergonomic brakes, giving operators greater control while reducing strain. Need to keep workspaces clean? Add the optional floor brush to sweep away debris and protect casters from damage.

With a precise 1/2" floor clearance and compatibility with 4" to 12" wheels, this guard integrates seamlessly into your existing setup. Order it pre-assembled on a new caster or install it yourself with the included kit—safety on your terms.

Manufactured in-house for faster lead times and superior quality, Hamilton's All-New Field Installable Toe Guard is the ultimate tool for workplace protection. When it comes to safety, there's no room for compromise.

HAMILTON®
Hamilton Caster & Mfg. Co.

CONTACT

1637 Dixie Highway
(513) 863-3300
www.hamiltoncaster.com
www.cartsandtrailers.com

The Hamilton logo is rendered in a bold, italicized, red sans-serif font with a registered trademark symbol.

The Toughest Casters on the Planet.

Visit us at ProMat
Booth #S1816

A large, stylized red letter 'H' logo.

The Best Heavy-Duty Casters Float to the Top.

You see a beautiful bridge. We see a hulking mound of steel and concrete supported by our heavy-duty casters. Lug every beam, girder and rail on Hamilton's highest capacity casters. Up to 20 tons each. [Learn More at HamiltonCaster.com](https://www.hamiltoncaster.com).

© 2025 Hamilton Caster & Mfg. Co.

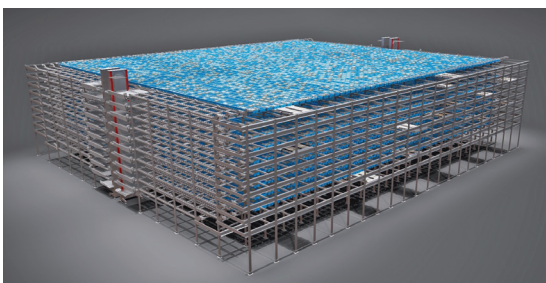


AGV Tugger Takes on Repetitive Tasks

The **TOW300 tugger AGV** can repeatedly move substantial loads with precision whether indoors or outdoors. As part of the wider MasterTow range, this adaptable AGV optimizes workflows in manufacturing, distribution, automotive, and others, taking on risky material and parts movements as well as repetitive tasks and lineside delivery for more efficiency. The TOW300 handles loads up to 6,600 lb (3,000 kg) and slopes up to 10 degrees. As a towing AGV, users can easily create a flexible train system by adding trolleys or carts to the tower.

MasterMover

More online: newequipment.com/55265959



AS/RS Cube Provides True Modularity

The **high-density, dynamic storage cube** uses autonomous robotics to deliver a high-turn, small-footprint, high-rise automated AS/RS that can incorporate conveyor functions—sortation, sequencing, prestaging, each picking, and order buffering—under the control of a WES to combine inbound and outbound material flows together. The system's "carrier" robots clear a 20-tray deep lane in 40 s and simultaneously put away and retrieve product in just one trip. It can also handle standard and large trays, full cases, and individual "each" picks, with trays capable of supporting loads up to 100 lb (45 kg). The modular rack design expands vertically and horizontally, operates on uneven floors, navigates complex layouts, and handles any ceiling height, making it adaptable for a wide range of industries, products, and materials.

Freespace Robotics

More online: newequipment.com/55266272



AS/RS Shuttle System Increases Throughput

The **Double Reach Shuttle** is an advanced AS/RS that maximizes space, improves efficiency, and meets the fast-paced demands of modern supply chains. Its compact design and high speed make it great for warehouses and distribution centers dealing with increasing SKUs and high throughput requirements. The narrow shuttle and double-reach transfer mechanism optimize aisle width, allowing facilities to double storage capacity vertically while reducing manual handling tasks. Able to manage diverse product types with weights up to 66 lb (30 kg), it works for lightweight and heavier goods. The Double Reach Shuttle handles approximately 1,000 cases/h/aisle for combined inbound and outbound operations, making it ideal for fast-paced environments and growing warehouses.

Murata Machinery USA, Inc.

More online: newequipment.com/55265897



Cloud-Based, Anti-Collision Safety Platform

Combining an advanced hardware and software platform to create a complete digital ecosystem, **Amesphere** features high-precision, anti-collision systems to prevent accidents in the warehouse while providing cloud-based connectivity that delivers real-time analytics and notifications. The platform streamlines logistics flows by optimizing forklift fleet routes, reducing operational times, and identifying inefficiencies. Supervising vehicle activities enables better resource planning and ensures accurate monitoring of driver behavior, including the detection of incorrect routes or unauthorized areas. All of this is done through sensors placed around the facility.

Advanced Microwave Engineering (AME)

More online: newequipment.com/55100235



Sustainable Auto-Bagger

The **Rollbag R985 Tabletop Automatic Bagger** is the first-ever compact, tabletop auto bagger designed for sustainable bagging with both paper and poly materials. It handles up to 40 bags/min or 12 bags/min depending on whether poly or paper is used. With the ability to operate with both PAC's Fiberflex preopened paper bags and Rollbag polyethylene preopened bags, the bagger offers flexibility and sustainability. In a time where the industry is facing uncertain regulations on plastic packaging, this machine guarantees that operations will not only meet but exceed expectations.

PAC Machinery

More online: newequipment.com/55263146



Loading Dock Vehicle Restraint System

The **POWER CHOCK AUTO** secures loading docks to increase safety. Using a patented combination of a chock and a restraining plate to immobilize the wheel, it provides up to 50,000 lb (23,000 kg) of restraining force to prevent trailer movement. Operators can secure trailers from inside the warehouse in under 30 s, while an interlock mechanism keeps warehouse doors closed until the trailer is safely secured. Visual and audible communication systems provide real-time feedback for workflow management and safety. The design works with any vehicle type—from semi-trailers to delivery vans.

GMR Safety

More online: newequipment.com/55267543



Wearable Picking Assistant

The **Wearable Task Assistant** is a wearable device that provides step-by-step guidance for users throughout the picking process with an E-Ink display that fits comfortably on the wrist. It displays all information, such as pick cart details, quantities, and put locations, while validating each step with a built-in scanner. This double-confirmation system helps employees reduce mistakes and improves order accuracy. By offering simple prompts, from scanning to placing, it reduces the need for memorization, allowing workers to focus on task completion rather than process details, freeing up valuable time.

Kardex Remstar

More online: newequipment.com/55266308



Transport AMR for Small Loads

AMY, a compact AMR that transports loads of up to 55 lb (25 kg), offers full flexibility, autonomy, and easy integration into larger fleets. Perfect for handling small parts, it's able to exchange loads with conveyor systems or transfer stations. AMY can be used individually or in a swarm and drives at speeds of up to 6 ft/s (2 m/s) using laser scanners at the front and rear with 360-degree visibility. Thanks to the three different models, AMY can be used for numerous applications.

DS Automation, LLC

More online: newequipment.com/55266001



Height-Adjustable, Ergonomic Workstations

Apex Series Powered Workstations are height-adjustable, ergonomic mobile-powered carts for easier mobility and safety in the facility. These workstations can power multiple devices at the same time—including laptops, tablets, LCDs, touchscreens, barcode printers, and scanners—for over eight hours of continuous use. With an adjustable height range of 30/33 to 48 in (80/84 to 120 cm), these workstations cater to all operators, promoting comfort and minimizing physical strain. The sit-stand functionality allows users to switch between sitting and standing positions.

Newcastle Systems

More online: newequipment.com/55270358



Electric Forklifts With Integrated Batteries

The **Integrated Mid & Large Electric Pneumatic Forklifts** are for heavy-duty applications, particularly outdoor environments. The Integrated Mid Electric Pneumatic Forklift can lift loads to 11,000 lb (5,000 kg). The Integrated Large Electric Pneumatic Forklift can lift loads to 17,500 lb (8,000 kg) and was designed for applications such as lumber yards, construction sites, and heavy-duty manufacturing facilities. Both models combine the lithium-ion battery and the forklift into one package making operation, ergonomics, and productivity easier. They also both provide the same power and performance as an internal combustion forklift, but they're completely electric.

Toyota Material Handling, Inc.

More online: newequipment.com/55266606



WMS Provides Predictive View of Warehouse Operations

eLogic, a cloud-based warehouse management system (WMS), combines all information in one, easy-to-use dashboard. This platform helps warehouses optimize performance, prevent downtime, and scale operations. The base offering provides productivity, system health, and storage utilization modules. Since the platform centralizes all information in one place, users receive real-time visibility with data-driven insights and predictive analytics for their entire operation. The Proactive Uptime Management function uses machine learning to predict and prevent robot failures. Able to integrate with any other WMS to increase flexibility, businesses can also add additional modules to tailor the platform to their specific needs.

Element Logic

More online: newequipment.com/55267476



Presence Sensing for Lift Trucks

The **iWAREHOUSE ObjectSense Detection & Notification System** uses audible and visual alerts to alert operators to obstructions while traveling in lift trucks. With controlled slowdown and stopping functionalities, operators remain in full control at all times. It can be used as a training reinforcement tool and is easily incorporated into existing Raymond fleets without layout or infrastructure changes. Relying on dynamic detection that automatically adjusts with lift truck speeds, it lengthens and shortens detection areas as needed.

The Raymond Corporation

More online: newequipment.com/55270314

THE QUALITY LUBRICANTS YOU NEED ►



Lubriplate is your one source for a complete line of premium quality lubricants. Each one is engineered from the ground up to provide a wide range of benefits that include: extended lubrication intervals, multiple application capability, reduced friction, extended machinery life and reduced downtime.

Available Products Include:

HIGH-PERFORMANCE SYNTHETIC GEAR OILS

SYNTHETIC AIR COMPRESSOR FLUIDS

SYNTHETIC HYDRAULIC FLUIDS

HIGH-PERFORMANCE SYNTHETIC GREASES

NSF H1 REGISTERED FOOD GRADE LUBRICANTS

ECO-FRIENDLY SYNTHETIC LUBRICANTS

SYNTHETIC SPECIALTY LUBRICANTS



Lubriplate®
Lubricants

Newark, NJ 07105 / Toledo, OH 43605 / Tel: 800-733-4755 / E-Mail: lubeXpert@lubriplate.com

THE EXTRA SERVICES YOU WANT



Lubriplate is also your source for a wide range of complimentary services designed to help improve and simplify your maintenance program. Lubriplate's lubrication experts will custom tailor a complete lubrication maintenance program just for you.

Complimentary Services Include:

COLOR CODED LUBRICATION CHARTS

COLOR CODED MACHINERY TAGS

COLOR CODED LUBE STORAGE SIGNS

COMPLETE PLANT SURVEYS

LUBRICATION TRAINING PROGRAMS

FOLLOW-UP OIL AND GREASE ANALYSIS

TECHNICAL SUPPORT HOTLINE AND E-MAIL

LUBRIPLATE		LUBRICATION CHART		CUSTOMER LOGO	
LUBRIPLATE PRODUCT		APPLICATIONS		DESCRIPTION	
OILS / FLUIDS					
FMO-85 AW* PART NO. L0880-060 / 5 GALLON PAIL		AIR LINE OIL		ISO 22 GRADE USP WHITE MINERAL OIL *NSF H1 FOOD MACHINERY GRADE	
FMO-150 AW* PART NO. L0879-060 / 5 GALLON PAIL		HYDRAULIC SYSTEMS		ISO 32 GRADE USP WHITE MINERAL OIL *NSF H1 FOOD MACHINERY GRADE	
SFGO ULTRA 46* PART NO. L0916-060 / 5 GALLON PAIL		AIR COMPRESSORS		ISO 46 GRADE SYNTHETIC PAO-BASED AIR COMPRESSOR FLUID *NSF H1 FOOD MACHINERY GRADE	
RCO-68FG* PART NO. L0818-060 / 5 GALLON PAIL		REFRIGERATION COMPRESSOR		ISO 68 GRADE SYNTHETIC PAO-BASED REFRIGERATION COMP FLUID *NSF H1 FOOD MACHINERY GRADE	
FMO-350 AW* PART NO. L0882-060 / 5 GALLON PAIL		CHAIN OIL		ISO 68 GRADE USP WHITE MINERAL OIL *NSF H1 FOOD MACHINERY GRADE	
SFGO ULTRA-100* PART NO. L0983-060 / 5 GALLON PAIL		VACUUM PUMPS		ISO 100 GRADE SYNTHETIC PAO-BASED LUBRICATING OIL *NSF H1 FOOD MACHINERY GRADE	
SFGO ULTRA-220* PART NO. L0985-062 / 55 GALLON DRUM		HELICAL GEAR BOXES		ISO 220 GRADE SYNTHETIC PAO-BASED LUBRICATING OIL *NSF H1 FOOD MACHINERY GRADE	
SFGO ULTRA-460* PART NO. L0985-062 / 55 GALLON DRUM		WORM GEAR BOXES		ISO 460 GRADE SYNTHETIC PAO-BASED LUBRICATING OIL *NSF H1 FOOD MACHINERY GRADE	
GREASES					
SYNXTREME FG-2/220* PART NO. L0309-098 / CARTRIDGE		GENERAL GREASE BEARINGS		NLGI #2 GRADE MULTI-PURPOSE, SYNTHETIC CALCIUM SULFONATE GREASE *NSF H1 FOOD MACHINERY GRADE	
CLEARPLEX 1* PART NO. L0350-035 / 35 lb PAIL		CENTRALIZED GREASE SYSTEMS		NLGI #1 GRADE USP MINERAL OIL BASED ALUMINUM COMPLEX GREASE *NSF H1 FOOD MACHINERY GRADE	
Lubriplate® Lubricants Company Corporate Headquarters: 129 Lockwood Street / Newark, NJ 07105 Tel: 800-733-4755 / Fax 973-589-4432 / Fax 800-347-5329 Midwest Office & Plant: 1500 Oakdale Ave. / Toledo, OH 43605 Tel: 419-591-2491 / Fax 419-593-3806 / Fax 800-347-5348 www.lubriplate.com / Email: LubeXpert@lubriplate.com				*NSF H1 Registered Food Machinery Grade 	

Color Coded Lube Charts customized for your plant

Lubriplate® Services

To Learn More Visit: www.lubriplate.com/services

SCAN THE QR CODE
TO LEARN MORE
ABOUT LUBRIPLATE'S
COMPLIMENTARY
ESP EXTRA SERVICES
PROGRAMS





MH&L Material
Handling
& Logistics

Navigating Supply Chain Disruptions: Then And Now

Learn how AI can solve century-old procurement issues.

By Edmund Zagorin

Historically, procurement and supply chain teams react to crises only after they have already begun. A crisis starts and suddenly the team goes into fire-fighting mode. After the situation is remedied, teams return to business as usual, only to await the next crisis. Balancing strategic imperatives with solving these short-term crises is the key to effective supply management.

Simply reacting to supply disruptions may reduce immediate challenges, but it often fails to drive strategic value for the organization. This reactive posture can take a toll on the supply chain team's morale, as their efforts to minimize disruption often go unrecognized.

For years, procurement and supply chain professionals have been forced to play defense, constantly reacting to minimize disruptions as they arise. This approach not only diminishes employee productivity by forcing them to constantly switch between projects and contexts, but it also undermines the perception of the function's strategic importance.

When procurement is focused solely on putting out fires, it can seem like the team is only able to solve immediate problems rather than drive long-term value. This perception becomes a self-fulfilling prophecy, as business stakeholders may hesitate to involve procurement early in the decision-making process—right when the team could deliver the most strategic impact.

But what if this could change? What if procurement could identify opportunities with strategic value for stakeholders and proactively bring them to the table to solve century-old supply chain issues?

Moving from Defense to Offense

If procurement and supply chain teams could move from a reactive posture to a proactive, predictive position, they could focus on strategic planning for future growth and innovation, as well as building supplier relationships to enable business growth. That's why AI and predictive analytics are essential to improving procurement technologies.

New technology is transforming the way supply chains are managed. Instead of addressing problems as they arise, procurement professionals can identify opportunities for strategic value early and often, developing proactive response plans for dealing with predictable disruption events.

While the specific timing and severity of disruption events like hurricanes, port closures, labor strikes, or country shutdowns are difficult or perhaps even impossible to predict, there are a finite number of event types each year that can disrupt supply chains, and thus a finite number of response plans that can assure resilient continuity of supply.

With the advent of new predictive procurement orchestration tools, supply planners, procurement and purchasing teams now have the capacity to reduce the chaos of unexpected disruptions. These tools also transform procurement into a strategic business function by avoiding harm and predicting value-creating opportunities. By leveraging these new technologies, teams are orchestrating smoother business operations, identifying additional sources within their existing supply base, and navigating challenges with greater agility.

Addressing age-old industry constraints with these advancements can transform procurement from a reactive firefighter into a proactive business partner and trusted advisor to stakeholders. The result is not just improved efficiency, but a shift toward a future where procurement leads the way in maintaining business continuity and seizing opportunity—even amid uncertainty.

A History Of Difficulty For The Panama Canal

Consider a recent real-world example: The Panama Canal, a well-established cargo route, is no stranger to challenges and complexities brought about by natural disasters, geopolitical tensions, or technical failures, to name a few. To the untrained eye, the Panama Canal is a constructed waterway acting as a reliable "shortcut" for goods being transported across the Atlantic and Pacific oceans. However, experienced suppliers know the canal is wrought with disruptions

from droughts that make it difficult to depend on, leading carriers in certain cases to cut their losses and opt to go around South America—a much longer, more costly route.

The increasing frequency and severity of these droughts, likely driven by climate change, compound these challenges and raise concerns about the canal's long-term sustainability. As concerns around the Panama Canal's reliability escalate, carriers and shippers must contend with the daunting task of pricing that uncertainty into contract negotiations. Even when a disruption does not take place, uncertainty itself can create additional costs.

A clear indicator of market response can be seen in the rising prices of container shipping contracts for 2025. Experts estimate that roughly 80% of all global goods are transported via ocean freight, making disruptions to key routes like Panama, the Red Sea and Taiwan a critical concern. If the COVID-19 pandemic has taught us anything, disturbances in one region often trigger a ripple effect throughout the global supply network.

Predictive Procurement for Supply Chain Resilience

In today's turbulent geopolitical environment, simply reacting to supply chain issues as they arise is no longer sustainable for businesses. End consumers are accustomed to instant access to goods and services, no matter the surrounding context. To weather these volatile times, organizations must take proactive steps, which begin with building

a strong, resilient supplier network that's able to re-route orders or create new agreements at a moment's notice.

That's why AI-powered predictive procurement technologies have the potential to revolutionize how companies address and prepare for supply chain challenges. Traditionally, procurement involved a great deal of manual effort, from sourcing and qualifying suppliers to negotiating contracts. This slow, reactive process left organizations vulnerable to disruption and created long lead times to deliver solutions. However, AI-driven tools are now helping to streamline and automate these labor-intensive tasks, allowing procurement teams to quickly identify alternative suppliers and manage spot-market opportunities when unexpected challenges arise.

By analyzing data trends, such as historical supplier performance metrics and environmental factors, these predictive procurement systems enable businesses to make more informed decisions proactively. Identifying alternative sources of supply within a company's existing supplier base is key, since qualifying new suppliers can be time-consuming, and expanding the total number of suppliers may introduce unnecessary complexity. Qualified alternatives can step in with primary suppliers facing delays and shortages. Additionally, securing carriers with secondary capacity is equally important, as logistical challenges often arise when transport routes are disrupted.

This level of adaptability will be crucial for safeguarding business continuity, ensuring that when one part of the

supply chain falters, the entire operation does not come to a standstill. Predictive procurement empowers companies to have contingency plans in place, allowing them to pivot quickly and keep operations running smoothly when unforeseen challenges arise. Moreover, by leveraging AI-driven insights, organizations can optimize inventory levels, negotiate more favorable contracts, and better manage fluctuating demand.

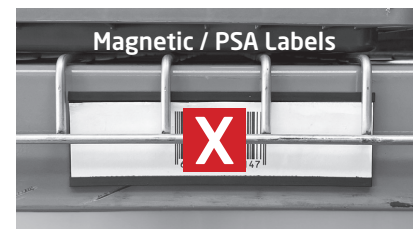
As supply chain challenges persist with no clear end in sight, leveraging AI-driven predictive models will be essential for controlling costs, ensuring on-time deliveries and mitigating risk. Predictive technologies can help businesses navigate disruptions like those we have seen plague the Panama Canal by identifying alternative routes and evaluating cost trade-offs, easing century-old issues like never before. The future of supply chain management depends on how effectively organizations can adapt to these evolving complexities, using technology to build resilience and maintain a competitive edge. **MH&L**

Edmund Zagorin is co-founder and chief strategy officer at Arkestro, provider of a predictive procurement platform that uses data science, machine learning and behavioral science. Prior to founding Arkestro, he worked as a consultant focused on data-driven supplier negotiations for large healthcare providers, contract manufacturers and multi-campus retail brands.

Deck•ID™



SECURE FIT with **HIGH VISIBILITY**
Label Protection for Wire Decking



Snap On — Cold Storage & Barcode Compatible — 2 Sizes Available

Visit Us at  **BOOTH #S209**

www.aignerlabelholder.com

EFFICIENCY METRICS PREDICTIVE ANALYTICS

Planning for the Next Shift

AI-based predictive analytics offer companies a way to future-proof their warehouse operations.

By Keith Moore

In today's fast-paced business environment, particularly in supply chain management, the ability to react quickly is critical—but it's no longer enough. Companies are under increasing pressure to predict and prevent disruptions before they occur. While many organizations focus on managing the immediate execution window of warehouse operations, planning for tomorrow's challenges can yield far greater results in terms of efficiency, cost reduction

and overall performance. Advanced warehouse orchestration platforms are designed to do just that: they go beyond managing present tasks to predict future bottlenecks and operational challenges, allowing companies to take proactive measures and maintain smooth, uninterrupted workflows.

This forward-thinking approach, fueled by artificial intelligence (AI) and predictive analytics, is revolutionizing the way businesses operate. It provides them with the

tools and insights to anticipate disruptions and optimize their processes in real-time. Here's a closer look at how this predictive approach works and why planning for tomorrow is the key to future-proofing warehouse operations.

Moving Beyond the Current Execution Window

Traditionally, many companies have managed their warehouse and supply chain

operations reactively, focusing on addressing challenges in the current execution window. For example, when a warehouse experiences delays in shipping or inventory shortages, immediate measures are taken to resolve these issues as they arise. While this reactive approach is necessary in fast-moving environments, it often leads to inefficiencies, unnecessary costs and missed opportunities to prevent similar problems from happening in the future.

AI-powered orchestration solutions shift the focus from simply managing present operations to actively predicting and preventing future issues. By analyzing vast amounts of operational data, these solutions identify patterns and trends that may indicate potential bottlenecks in the days ahead. This allows companies to foresee issues such as labor shortages, equipment breakdowns, or delayed shipments before they occur, giving them time to adjust and implement preventive strategies.

This shift from reactive to proactive management enables businesses to maintain smoother operations, improve throughput and enhance labor efficiency, all while reducing the risk of costly disruptions.

The Power of Predictive Analytics

At the heart of this proactive approach is predictive analytics. Predictive analytics uses historical data, machine learning algorithms and statistical models to forecast future events and behaviors. By applying these methods to warehouse operations, predictive analytics can identify potential bottlenecks and performance issues well before they impact the supply chain.

For example, predictive analytics can forecast future labor shortages by analyzing past labor trends, seasonal fluctuations and upcoming order volumes. If a shortage is predicted, the system can recommend adjusting staffing levels or reallocating resources to avoid delays. Similarly, predictive analytics can predict when certain equipment may require maintenance or inventory levels are likely to drop below critical thresholds, allowing businesses to take preventive actions and avoid disruptions. This level of insight enables businesses to stay ahead of challenges, minimize risk and make data-driven decisions that ensure continuous operational efficiency.

Preventing Bottlenecks and Operational Disruptions

Bottlenecks related to labor, equipment, or inventory are among the most significant threats to warehouse efficiency.



**FALLEN FREIGHT?
WE HAVE THE ANSWER!**

**ANCRA'S NEW FREIGHT SAVER
"THE CRITTER"**

P/N: 51378-10

Also Works in Trailers

Patent Pending

Your ultimate solution for efficiently recovering shifted freight. Minimize damage, reduce injury risk, and stabilize freight for quick repositioning.

- Chain attaches "The Critter" to forklift for added security
- Easily lift freight that has shifted off of the deck or rack
- Skids can be lifted off the deck bar or rack to adjust beams
- Remove shifted freight quickly with minimized damage



How-To-Use
Video

ANCRA CARGO

LEADER IN LOAD SECUREMENT INNOVATION
1-800-233-5138 | www.ancracargo.com



These disruptions can lead to delays, increased costs and missed deadlines, impacting customer satisfaction and long-term profitability.

Predictive analytics allows businesses to foresee bottlenecks before they become critical. By continuously monitoring data streams from various sources, a warehouse orchestration platform provides real-time visibility into the warehouse's performance and identifies areas where potential issues might arise.

For example, suppose predictive analytics indicate that a certain shipping lane will be delayed due to increased demand or reduced capacity. In that case, a warehouse orchestration platform can suggest rerouting goods to avoid congestion. If labor constraints are forecasted for an upcoming shift, the system can automatically adjust schedules, reassign workers, or deploy automation solutions to mitigate the impact.

This proactive approach not only reduces the likelihood of bottlenecks but also optimizes resource allocation and workflow prioritization, allowing businesses to maintain high levels of operational efficiency even during periods of stress or high demand.

The Benefits of Proactive Warehouse Management

The shift from reactive to proactive warehouse management brings several significant benefits. Here are some of the key advantages of using warehouse orchestration solutions to plan for tomorrow's challenges:

Improved Resource Allocation

Predicting future bottlenecks enables businesses to allocate resources—such as labor, equipment and space—more effectively. Instead of scrambling to find solutions in the midst of a disruption, companies can adjust staffing levels, deploy additional equipment, or optimize space usage in advance.

Increased Labor Efficiency

Labor is one of the most significant costs in warehouse operations, and inefficiencies in labor management can lead to wasted time and resources. By predicting future labor needs, a warehouse orchestration solution helps businesses ensure they have the right number of workers assigned to the right tasks at the right time. This not only reduces downtime but also improves overall productivity and employee satisfaction.

Reduced Downtime and Delays

Unplanned downtime can be costly, whether due to equipment failures, labor shortages, or inventory mismanagement. Predictive analytics help prevent downtime by identifying potential issues before they escalate. By proactively scheduling maintenance or adjusting workflows, businesses can minimize disruptions and keep operations running smoothly.

Enhanced Decision-Making

One of the most powerful aspects of predictive orchestration is its ability to provide actionable insights. With real-time data and forward-looking forecasts, warehouse

managers can make better, more informed decisions about handling day-to-day operations and long-term strategies. This leads to better outcomes and improved performance across the entire supply chain.

Future-Proofing Operations

Planning for tomorrow's challenges helps businesses build resilience against future disruptions. Whether it's a sudden surge in demand, a labor shortage, or an unexpected equipment failure, companies that use predictive analytics are better prepared to adapt and overcome these obstacles. Staying ahead of challenges makes it easier to scale operations, meet customer expectations and remain competitive in an ever-changing market.


Real-World Applications of Predictive Orchestration

Proactive orchestration solutions have been successfully implemented by several industry leaders, demonstrating the effectiveness of this forward-looking approach.

For instance, at large-scale operations like food and beverage giant PepsiCo, predictive orchestration has helped significantly reduce trailer dwell time, optimize labor allocation and streamline inventory management. By predicting potential disruptions before they occur, these organizations have improved throughput, reduced costs and delivered better service to their customers.

Moreover, this type of platform integrates seamlessly with existing warehouse management systems (WMS), making it a valuable addition to any business looking to enhance its operational capabilities without needing a complete system overhaul. This integration ensures businesses can continue using their current systems while benefiting from AI-driven technology's advanced predictive insights. **MH&L**

Keith Moore is the CEO of AutoScheduler. AI, a WMS accelerator created to help orchestrate poorly coordinated facilities. He was previously chief product officer.



9 Years

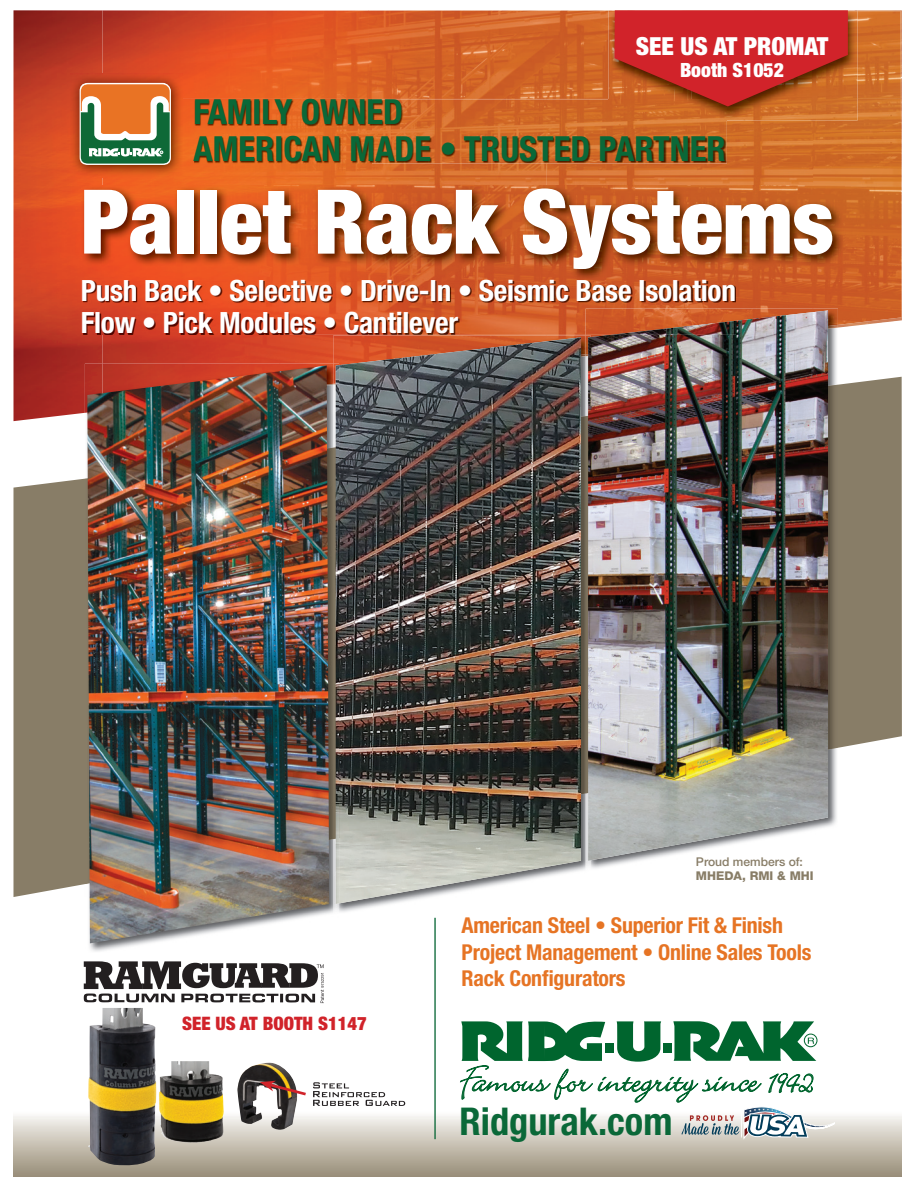
100% virgin urethane (no regrind waste) makes stronger, longer lasting belts.

LONG-LIFE BELTS MOVE HEAVY LOADS

When a competitor's belts failed after only nine months service in a large postal distribution center, Dura-Belt's **Long-Life HT belts** replaced them. **Nine years** later, HT belts are still going strong -- moving your mail on conveyors that run 24 hours/day, 7 days/week.

Even though some postal tubs have soft bottoms and carry over-weight loads, HT belts take the punishment and keep the mail moving. Over **120 million** are in service on powered-roller conveyor systems. For longer-life and heavier loads, try time-tested HT (high tension) O-ring belts -- the only ones colored **"Post Office Blue"**.

Dura-Belt 800-770-2358 614-777-0295
Fax: 614-777-9448 www.durabelt.com



SEE US AT PRMAT Booth S1052

RIDG-U-RAK FAMILY OWNED AMERICAN MADE • TRUSTED PARTNER

Pallet Rack Systems

Push Back • Selective • Drive-In • Seismic Base Isolation
Flow • Pick Modules • Cantilever

Proud members of: MHEDA, RMI & MHI

RAMGUARD COLUMN PROTECTION
SEE US AT BOOTH S1147

RIDG-U-RAK
Famous for integrity since 1942
Ridgurak.com PROUDLY Made in the USA

American Steel • Superior Fit & Finish
Project Management • Online Sales Tools
Rack Configurators

FROM THE COVER

Small Diameter Deburring

A small mechanical deburring tool for 1 to 2.1 mm bores, the DL2 works with a wide range of materials including steel, stainless steel, titanium, aluminum, composites, and others. Designed for CNC operation, the DL2 provides high efficiency and process reliability on even and slightly uneven bore edges.

With the simple construction of 4 components, the carbide blade is integrated into the spring to form a single unit, ensuring proper spring tension for guiding and cutting forces of the blade and making it easy to change blades. The DL2 features internal blade cooling where the coolant is supplied through the tool and guided directly to the cutting edge of the carbide blade.

DL2 tooling is ideal for deburring watch cases, medical & surgical components, and other precision micromachining applications. Heule DL2 tooling is available for bores from 1 to 2.1 mm with a maximum deburring capacity of 0.15 to 0.2 mm, with common sizes available from stock.

Heule Tool Corporation

More online: newequipment.com/55270398



AI Accelerates Digital Transformation Through Data

Kinsmen AI solves demanding data challenges for asset-heavy companies. By cleaning, contextualizing, and organizing data across all sources and systems, it bridges the gap between

legacy and modern systems to help leverage advanced tools like visualization, digital twins, and analytics. It streamlines acquisitions by aligning and standardizing industrial data, simplifies divestitures through organized and cleansed information transfers, ensures error-free system migrations, enables digital transformation readiness, and provides compliance confidence with audit-ready data.

Kinsmen Group, LLC

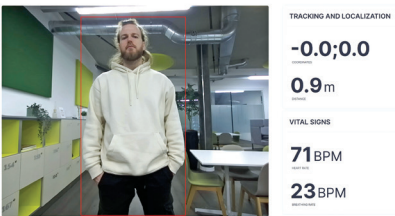
More online: newequipment.com/55265614

AI-Powered Multimodal Sensing Platform for Human-Machine Interaction

The Multimodal People Sensing Software Platform is designed with a hardware-agnostic approach, to empower users with human detection technology which offers capabilities in vital signs monitoring, precision positioning, and space utilization through patented AI-driven sensor fusion algorithms. Using machine learning and advanced sensor fusion techniques, including UWB and wireless sensors, it enables real-time human presence sensing and vital sign monitoring for automotive, industrial, and indoor navigation. The platform enables safe human-machine interaction, detecting where humans are within space; provides real-time occupancy monitoring to enable better optimization of space usage; and can reveal contactless heart and breathing rates of humans.

Algorized

More online: newequipment.com/55269680

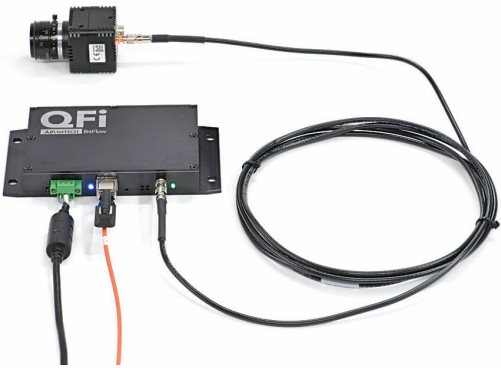


Copper-to-Fiber Module Simplifies Data Transmission

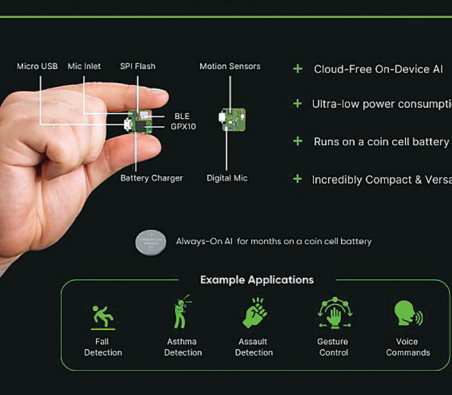
The QFi is a copper-to-fiber module that supports long-distance data transmission from a single-link CXP camera to a host PC. With link speeds up to 10 Gb/s and cable lengths of 0.5+ mi (1+ km), it provides a cost-effective way to extend CXP transmission. The QFi outputs camera data via an SFP+ fiber cable assembly and into a Claxon quad-link CoaXPress over Fiber frame grabber in the host PC. A max of 4 QFi modules can connect to a Claxon frame grabber, offering single or multicamera configurations to deliver speeds up to 40 Gb/s.

BitFlow, Inc.

More online: newequipment.com/55261633



Introducing Sparsh AI Module



Battery-Powered AI Module

A coin-cell battery-powered AI module named the Sparsh-board for on-device AI applications such as predictive maintenance, wearables, acoustic event detection, and more is capable of running on a coin-cell battery for months of always-on AI operation. With motion sensors, a digital microphone, a BLE module, and several other components, the Sparsh module enables rapid prototyping of battery-powered AI applications. Product makers can enable accurate

AI applications without compromising on performance, battery life, form factor, and flexibility.

Ambient Scientific, Inc.

More online: newequipment.com/55262424

Lead-Free Machinable Steel

Lead-free machinable steel, 11SMn30+BX, is great for the precise manufacturing of components and is easy to cut and mill without causing excessive wear on tools. Traditionally, lead was added to improve the machinability of these steels but the Swiss Steel Group has replaced lead with the more environmentally friendly element boron. Its consistent quality reduces maintenance intervals and increases uptime, lowering production costs.

Swiss Steel Group

More online: newequipment.com/55271726





Chemical Metering Pumps for Full Control

The **TD Series Chemical Metering Pump with FLUXDRIVE technology** features a range of control features. From optional manual speed adjustment to its compatibility with SCADA systems for full remote control, the series offers a great level of flexibility. MODBUS and Bluetooth connectivity enable these pumps to integrate into modern industrial environments. The liquid ends have integrated double-ball check valves and over-molded diaphragms for better durability, operating continuously for up to 40 million strokes. Coupled with FASTPRIME technology, these pumps guarantee quick commissioning and priming. The TD Series is available in three models: Basic, Advanced, and COMMs.

LMI Metering Pumps

More online:
newequipment.com/55264462



No-Programming Safety Control Module

The **FS1B Safety Controller**—an upgrade of the popular FS1A device—lets designers create streamlined machine safety systems with multiple safety channels by using any of 24 preset safety logic strategies selected with DIP switch configuration with no programming. DIP switches and a single “enter” pushbutton provide a quick and easy setting of the safety logic strategy, inputs, and power-off delay time. Colored LEDs and 7-segment numeric displays provide clear at-a-glance device and input/output status.

IDEC Corporation

More online:
newequipment.com/55260067

AI-Powered Solutions for Energy Management

Arcadia Enterprise Solutions helps companies ensure energy is consistently affordable, reliable, and clean. It uses Arcadia’s utility data platform, AI analytics, an expansive partner network, and industry expertise to help with end-to-end energy management. The main offering is the Arcadia Platform—a utility data, tariff, and payments software that consolidates energy data from 10,000 utilities and third-party sources into a single, actionable view. The platform offers three core solutions: Utility Bill Management, Energy Procurement Advisory, and Sustainability Reporting.

Arcadia

More online: newequipment.com/55264312



**EMPOWERING PRECISION,
INSPIRING INNOVATION**

MAY 14-15, 2025

**Oregon Convention Center
Portland, OR**



machinetoolexpo.com

OWNED & PRODUCED BY:
 **ENDEAVOR**
BUSINESS MEDIA



Antivibration Gloves With High-Dexterity and Cut Protection
Antivibration High-Dexterity Nitrile Dipped Gloves protect from harmful tool vibrations, providing protection while maintaining high dexterity. Designed for applications such as drilling, sanding, grinding, cutting, chipping, breaking, and demolition work, the gloves provide a Cut Level 4 rating to protect from lacerations and meet safety requirements on the job site. With a soft and comfortable liner, the 18-gauge material provides total hand mobility when working with small fasteners. With back-of-hand protection to shield against bumps and scrapes, the nitrile dip ensures holds up to abusive job site conditions. They also have SMARTSWIPE for a touchscreen-compatible fingertip.

Milwaukee Tool

More online: newequipment.com/55253460



No-Rinse Alkaline Cleaner for Food & Beverage Plants
RAF NO FOAM Cleaner is an alkaline cleaner for clean-in-place systems within food, beverage, and dairy processing plants. It has a high percentage of available chlorine in a medium-duty, highly sequestered formulation for maximum performance. It's low foaming even at high concentrations and high circulation velocities. Ideal for hard or soft water environments, it doesn't need to be rinsed, doesn't leave spots, and leaves no residue or odor after use.

Madison Chemical

More online: newequipment.com/55259782



Digital Filter Lens for Auto-Darkening Helmets
A true-color digital variable auto-darkening filter lens replacement for auto-darkening helmets allows users to have a light shade of 3 to a dark shade of 5-9/9-13 to be used in different applications. The design fits all 2 x 4.25-in (5 x 11 cm) welding helmets and has a stainless-steel frame to reflect infrared heat and light. The filter lens features a true-color blue HD technology that alleviates eye and neck fatigue while providing enhanced visibility and clarity. The filter is powered by solar and a rechargeable battery.

Weldcote

More online: newequipment.com/55269341

ULINE

MACHINE GUARDS
IN STOCK IN 13 LOCATIONS
FOR FAST DELIVERY

ORDER BY 6 PM FOR
SAME DAY SHIPPING

COMPLETE CATALOG 1-800-295-5510 uline.com



Compact Metal Laser Cutters

The **FC-22** and **FC-22C Fiber Laser Cutters** are small, powerful, and precise—perfect for businesses venturing into professional metal cutting. Both laser cutters offer 1,500 W of laser power, easily slicing through tough metals with a cutting speed of 27.5 in/s (700 mm/s). The fully enclosed structure with an observation window ensures protection from laser leaks. The laser cutters offer a 24 x 24-in (610 x 610 mm) cutting area and have built-in water chillers. The FC-22 even includes front/back pass-throughs accommodating materials up to 25 in (630 mm) wide for more versatility.

OMTech Laser

More online:
newequipment.com/55253470



Dry Cooler for Water-Efficient Cooling

The **TrilliumSeries** dry cooler is a high-capacity cooler for sustainable, water-efficient cooling for customers in water-stressed areas. The dry cooler reduces reliance on water while providing reliable heat rejection which is particularly vital for data centers and manufacturing facilities where uptime and operational efficiency are paramount while minimizing water usage. Delivering a high cooling capacity in a small footprint, it's a good choice for space-constrained environments. Additionally, its features minimize maintenance, reduce installation costs, and lower noise levels.

Baltimore Aircoil Company

More online:
newequipment.com/55265248

DC Power Supplies With 3U Form Factor

The HPS Series 20 kW DC Power Supplies offers two models: **HPS20K800** (800 V/25 A) and **HPS20K1500** (1500 V/13.4 A). Models can be combined to increase output to 160 kW. The touchscreen displays set and measured values as well as simulated internal resistance. The front panel USB host port is available for logging voltage and current data. Standard interfaces include LAN and RS232 for remote PC control and monitoring. The galvanically isolated analog interface provides output control and monitoring using an external voltage source.



B&K Precision Corporation

More online: newequipment.com/55264449

Sensor Prevents Excess Moisture

The **AVENTICS DS1 dew point sensor** monitors dew point, temperature, humidity levels, quality of compressed air, and other non-corrosive gases from one device. It helps operators detect and mitigate excess moisture in its early stages and prevent moisture-related equipment damage. Measurement values include pressure dew point, temperature, relative humidity, absolute humidity, moisture content, moisture content V/V, water vapor partial pressure, and atmospheric dew point. The DS1 is also suitable for other non-corrosive gases, including nitrogen, oxygen, argon, helium, and sulfur hexafluoride.



Emerson Electric Co.

More online:
newequipment.com/55260056





100 YEARS

Specify Wooster
"Make Every Step a Safe One"



STAIRMASTER®

- Restore Any Stair
- Anti-Slip Properties
- Highly Durable
- ADA, OSHA, and ASTM Compliant

1.800.321.4936
www.woosterproducts.com
sales@wooster-products.com

PROUDLY MADE

IN THE USA



— Since 1932 —





Data Center Guarding



Self-Dumping Hoppers



Pallet Rack Guarding



Side Pivoting Hoppers



Machinery and Rack Guards



Machinery Cells



Economy Rail System



MHI
Member Company



ProGMA
PROTECTIVE GUARDING MANUFACTURERS
safer by Design



From the manufacturer to the customer
Jesco does it best!

Call 800.609.8290
Visit **JescoOnline.com**

Jesco Industries, Inc.
950 Anderson Rd.
Litchfield, MI 49252
Ph 517.542.2903
Fax 517.542.2501

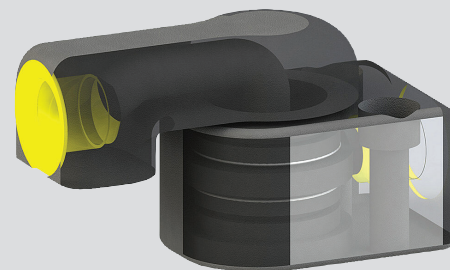
FROM THE COVER

Hose Joint for Unrestricted Rotation

The **Flex-Guard Hydraulic Hose Joint** is a new hydraulic hose swivel designed to eliminate wear issues associated with flexible hoses. The custom hose swivel fitting integrates into existing hydraulic systems, allowing hoses to rotate freely, preventing wear and reducing hose damage. Whether you need an in-line swivel or a rotating joint swivel, the Flex-Guard fits easily into your machinery without the need for modifications.

It's ideal for machinery where hoses are subject to significant wear or sharp bends, locations that are difficult to access for maintenance, or 4-wire braided hoses used in high-pressure applications. United Equipment Accessories can tailor the hose to fit specific mounting, size, number of hoses, pressures, and spatial constraints of your application.

United Equipment Accessories, Inc.



More online: newequipment.com/55270405

High-strength Tanks

- Will not corrode, embrittle, or de-laminate.
- Exceptionally stress and crack-resistant, excellent dielectric properties, repairable on-site.
- Made in USA



Also available:
Hoods, ducting and ventilation systems

Tri-Mer[®]
CORPORATION

Manufacturing in Owosso, MI USA

(989) 723-7838
salesdpt@tri-mer.com



Groundwater Sampling Pump

The **MicroPurge MP100** peristaltic pump system for low-flow groundwater purging and sampling produces flow rates of up to 1,500 ml/min and lifts up to 30 ft (9 m) using standard silicone tubing sizes. Granting full control over the purging and sampling process, it's ideally suited for sam-

pling PFAS due to the water sample only making contact with the drop tubing in the well. The MP100 is offered with disposable pump tubing and drop tubing for portable applications or can be configured with an available well cap and tubing weights for dedicated applications.

QED Environmental Systems

More online: newequipment.com/55262830

Mini Linear Servo Motor

The **SDLM-016-032-01-01-M (Metric) Direct Drive Linear Motor** with an integrated encoder and temperature sensor features zero backlash, zero cogging, high acceleration, high speed, high resolution, and long life. This motor has a stroke length of 0.25 in (6 mm), a continuous force rating of 1.14 N (4 oz), a peak force of 3.6 N (13.0 oz), and 1.08 N/A (4 oz/A) force constant. It has a quiet long life, plain linear bearings, and connections are easily made via a flex cable terminated in a 10-pin female connector.



Moticon

More online: newequipment.com/55263967

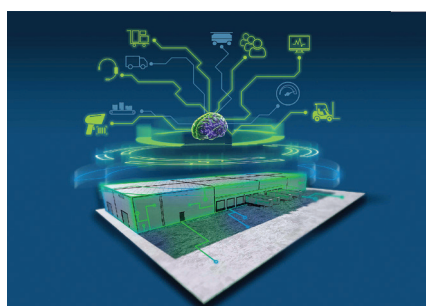


Quarter-Turn Pin-Holding Clamps

Fixtureworks now offers two varieties of quarter-turn pin-holding clamp fasteners: The **QCPC** and heavy-duty **QCPCS**, as well as corresponding clamping pins **QCPC-M** and **QCPCS-M**. With either plastic or stainless-steel knobs, the clamps provide positive locking in quick change applications for frequent insertion and removal of a fixture or top plate. They allow for consistent fastening force eliminating the chance for under or over-tightening. The QCPC clamps are designed to be used with the QCPC-M pins and the QCPCS clamps are designed to be used with QCPCS-M pins for use on plates.

Fixtureworks

More online:
newequipment.com/55259735



Optimize Your Warehouse Travel

Helping warehouses make quicker and more effective decisions for order batching & prioritization, warehouse worker travel, and slotting, the next-generation **Dynamic Work Optimization (DWO)** platform considers order priority, SKU clustering, proximity, and warehouse layout to reduce travel time by optimizing pick paths. A virtual model of your facility is used to define the best travel path, considering aisle directions, item designations, and other factors. All available work assignments are prioritized based on rules that can be configured and adjusted such as ship dates, routes, carriers, order types, and more.

Lucas Systems, Inc.

More online: newequipment.com/55265409



Keep AI Security Threats at Bay

Cyberhaven for AI is a comprehensive solution that enables enterprises to securely adopt generative AI while protecting sensitive data. See every AI tool used by your organization, who's using them, and what kinds of data are interacting with them. Record all data flows to the internet without any configuration needed and trace data from its origins. Protect against the accidental use of copyrighted material from AI, reduce the risk of decisions made on AI hallucinations, and guard against malicious code by identifying the source of data.

Cyberhaven

More online:
newequipment.com/55263903



Quick Release Ball Lock Pin Shafts

Quick release pins are offered in a variety of shaft materials to meet any demand. The pins are available in a variety of lengths and diameters and the shaft/shank materials are available in heat-treated 17-4 stainless steel, 300 series stainless steel, and heat-treated/plated 4130 alloy steel. The positive-locking pins will not release until the button on the handle is depressed, which causes the balls to retract into the pin and allows the pin to be removed from the hole.

Fairlane Products

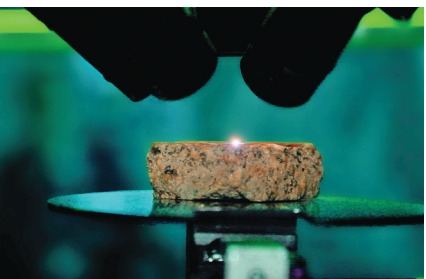
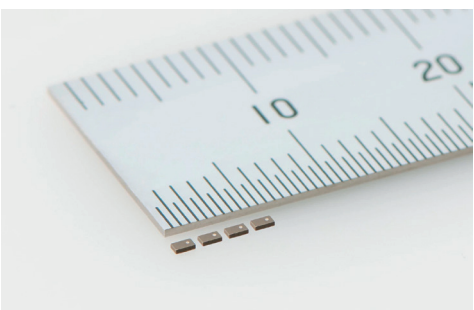
More online:
newequipment.com/55263135

Multilayer Metal Power Inductors

Part of the MCOIL LSCN series of multilayer metal power inductors, the **LSCND1005CCTR47MH** (1 x 0.5 x 0.33 mm) inductor can be used as choke coils in the power supply circuits of wearable devices, such as smartphones, AR/VR glasses, TWS devices, and smartwatches. The inductor offers a low height and has a thickness of 0.33 mm. The MCOIL LSCN series uses metallic magnetic materials with high DC saturation and provides superior characteristics for achieving miniaturization and thinness.

Taiyo Yuden

More online: newequipment.com/55269669



Scanner Identifies Materials at the Speed of Light

ABLASCAN is the first intelligent LIBS microscope capable of reliably and automatically revealing materials' atomic composition in milliseconds. This customizable, plug-and-play microscope democratizes cutting-edge laser technology to meet

the needs of laboratories and industries across the entire material life cycle. Users don't need to be a chemist, physicist, or data processing expert. Using AI, the microscope accelerates and automates the chemical analysis of materials at the microscopic level. In just minutes, any operator can obtain a qualitative and quantitative analysis report, including optical images and detailed chemical maps of the material.

Ablatom

More online: newequipment.com/55262810



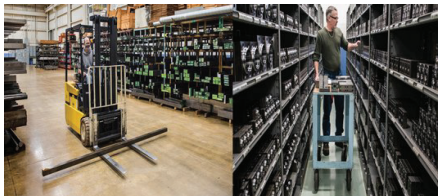
Take Multiple Images at Lightning Fast Speeds

The **allPIXA evo 16k line scan camera** with a CMOS multiline sensor with 16,384 5 x 5 μm pixels, is capable of scan rates of 200 kHz in monochrome or 73 kHz in color. The camera's CoaX-Press-12, 4-lane interface achieves lightning-fast data transmission with each of the lanes has a top speed of 12.5 Gbit/sec. The camera also supports Power over CoaXPress, supplying power over the same cable transmitting data, and eliminating the need for a separate cable. It has a multifield feature that allows up to 4 images to be acquired in a single pass.

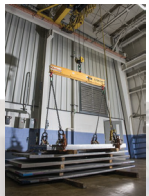
Chromasens GmbH

More online:
newequipment.com/55264784

Don't Compromise! Use MAIN Manufacturing as your source for Hydraulic Flanges and Components



Quick- MAIN has \$5 million finished goods and 200 tons of raw material for quick specials.



Informed- MAIN's engineers are active in SAE, NFPA, & ISO committees



Dependable - Over 60 years of service to the industry



MAINmfg.com

Made in Grand Blanc, MI

800.521.7918

info@mainmfg.com

Multifunctional Leak Tester

The **Sentinel IX5** is a multifunctional leak test platform for pressure, flow, and vacuum leak testing. The first instrument in the fifth generation of the Sentinel family, it features an entirely new design. The touchscreen offers simplified menus, customizable screen views, real-time data, and more. Users can easily tap, build, and visualize all steps in test sequences and preview and sequence a test before running it. Choose from 9 different test methods and combine multiple methods on one instrument. The instrument can replace a PLC to control test operations.



Cincinnati Test Systems, Inc.

More online: newequipment.com/55261334

Spatial Audio Sensor for Wearables

The **InvenSense VibeSense360** sensor for spatial audio head tracking gives customers more design flexibility by adding more UI gestures specially designed for true wireless stereo applications. It also runs multiple features including machine learning concurrently on the IMU. It can be used for in-ear buds, over-ear headphones, and wearables. It detects when the user is speaking and shifts from noise cancellation to transparency mode, as well as pauses any audio that may be playing—even in noisy environments. Always-on gesture detections include tap, double tap, triple tap, wide-area tap, head gestures, and activity/inactivity detection.

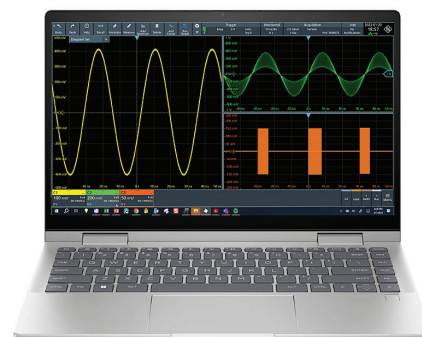


InvenSense | TDK Corp.

More online: newequipment.com/55271627

PC-Based Oscilloscope Software

ScopeStudio software brings the functionality of an oscilloscope to a PC, allowing engineers to visualize, analyze, document, and share oscilloscope measurements, making development teams more efficient. Since users can view and analyze previously acquired data away from the instrument, it leaves the oscilloscope free for others to use. The standard features of the application include R&S SmartGrid, cursors, 40+ automated measurements, mathematical functions, filters, and spectrum viewing of time-domain signals.

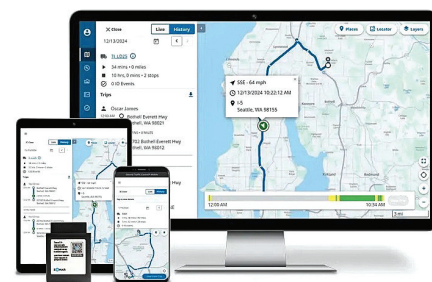


Rohde & Schwarz USA, Inc.

More online: newequipment.com/55263813

Fleet Tracking Device

Zonar LD Telematics Control Unit delivers fast vehicle intelligence and security data for fleets. Vehicles receive device performance enhancements over the air, including expanded vehicle, engine control module, odometer, and diagnostic trouble code coverage. More fleets can also benefit from Zonar due to the increased range of supported vehicle types and models. Operators gain visibility into towing events and with cold-start event tracking, it's easy to identify device tampering, improving the security of vehicles and assets.



Zonar Systems

More online: newequipment.com/55271609

Streamline Barcode Labeling Tasks

The **BX410T Series** thermal printer uses the company's A-BRID ecosystem, which merges multifunction printers with label printers, so organizations can track packages, connect to the cloud, clone tasks, manage printer fleets from any location, control all aspects of label production, remove extra software, and eliminate workstations. Printing 4-in labels at 14-in/s (10 cm at 35 cm/s) with up to 305 dots/in label resolution, the series features label near-end detection, proprietary Ribbon Save technology, a full-color LCD, and QR code functions for support.



Toshiba America Business Solutions

More online: newequipment.com/55271714

UP TO 80% SLOWER RETRACTION

INNOVATING SAFETY

COXREELS®

EZ-COIL
PATENTED REWIND SYSTEM

SAFEST REELS IN THE INDUSTRY.

- ✓ Eliminate dangerous whipping hazards.
- ✓ Increase worksite safety & efficiency.
- ✓ Requires no external power source.
- ✓ Wide array of reel models & options.

DURABLE. RELIABLE.
HOSE, CORD, & CABLE
PRO GRADE REELS

MADE IN THE USA SINCE 1923

LEARN MORE: TOLL FREE | 800.269.7335
WWW.COXREELS.COM

FOLLOW US:

FROM THE COVER

Live Streaming Camera Series

The **uEye Live camera series** creates an easy and quick integrated camera solution for visualizing machine processes without any programming or an additional PC.

The GigE cameras are designed for standalone operation. In addition to easy access via the web front end (HTTP), users benefit from video streaming, hardware-accelerated video encoding, and event-based recording in the camera memory. This function allows complete documentation of machine malfunctions or failures. As a result, potential process errors can be analyzed and possible reasons identified.

They can deliver multiple video streams at the same time, and thanks to Sony Starvis 2 technology and the integrated image signal processor, they provide impressive image quality in low-light situations. The camera can directly edit, process, filter, or evaluate image data. Instead of sending single raw images, the camera transmits up to three parallel video streams to various end devices.

Two of IDS' camera series incorporate live streaming: The uEye SCP series and the uEye SLE series. The uEye SCP series has a completely closed, 29 x 29 x 29 mm (1 x 1 x 1 in) housing. The uEye SLE line consists of board-level models for embedded applications with different mounting options. As of now, the first uEye SCP camera with the 8.3 MP rolling shutter sensor IMX678 from the Sony Starvis 2 series is available. The board-level version and additional sensors will follow later this year.

IDS Imaging Development Systems, Inc.

More online: newequipment.com/55265377



Speedy Area & Line Scan Cameras

Part of the Zenith series of 100GigE area scan cameras, the **HZ-12000-G**, **HZ-14000-G**, and the **HZ-25000-G** feature back-side illuminated sensors, color and monochrome options, and support for zero-copy imaging and GPUDirect. Joining the Pinnacle series, the **LZT-8KG5** and **LZT-16KG5** monochrome line scan cameras feature advanced time delay integration sensors, can synchronize to the movement of a conveyor or web for applications, enable higher speeds with the same lighting, and support zero-copy imaging and GPUDirect

Emergent Vision Technologies

More online: newequipment.com/55271705



Ultra-Dry Compressed Air

Featuring a modular twin-tower desiccant system for better moisture control and energy efficiency, the **Airmate HLD Series** provides ultra-dry compressed air. Engineered to achieve ISO 8573-1:2010 Class 2 compressed air quality, the dryer maintains -40°F/C pressure dew points and the adjustable purge optimizer allows customization of the regeneration flow percentage according to moisture level drying needs. Available in capacities ranging from 10 to 375 cfm, the series is ideal for painting, powder coating, pharmaceuticals, dental laboratories, glass manufacturing, semiconductors, and food processing.

ELGli Compressors USA, Inc.

More online: newequipment.com/55271648

Pressurized, Metal Oil Drains

K-Tool International's line of metal, air-pressurized oil drains (**KTI74552HD** and **KTI74553HD**) are both designed for use as mobile waste containers and drain tanks during oil changes. The 18-gal oil drain (74552) features a discharge hose with a shut-off valve, fluid level gauge, and air pressure valve. The 30-gal oil drain (74553) has a heavy-duty collection funnel and a 16-in (40 cm) diameter filter screen. Both accept air pressure up to 7 psi and come with an evacuation hose, an NPT air coupler, and an oil level sight gauge.

K-Tool International

More online: newequipment.com/55269333



WHEN IT COMES TO
TODAY'S LABOR SHORTAGE...

...CREFORM AGVs PERFECT THE ART OF WORKFLOW.

One of the toughest material handling management responsibilities is finding the right manpower. That right 'manpower' might just be a Creform AGV. Creform has the hardware, software and engineering support to provide cost-effective and reliable solutions to the primary issue facing manufacturing today... manpower. Whether it's a simple on-vehicle project or a plant-wide system, Creform provides an integrated approach to today's labor shortage. *That's perfecting the art of workflow.*

CREFORM® MATERIAL HANDLING SYSTEMS
www.creform.com • 800-839-8823



NED LITERATURE DIGEST

The finest in industry specific print/digital catalogs, brochures and product descriptions.



GREAT QUESTION A Manufacturing Podcast

News and information for the people who make, store and move things and those who manage and maintain the facilities where that work gets done.

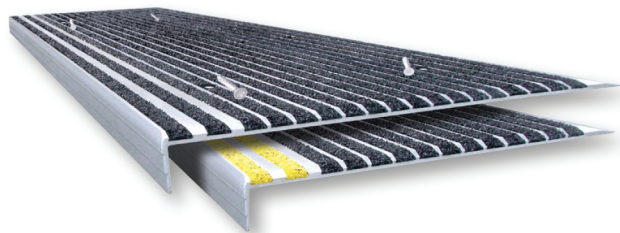
The latest episodes:

Are You Using These 7 Steps for an Efficient Plant Turnaround
What You Need to Know About Exosuits
What's New in the World of Robotics?
Achieving Automation With "Made in America"

Subscribe Now And Never Miss An Episode

www.newequipmentdigest.com/great-question

STAIRMASTER® Anti-Slip Stair Treads
For worn, slippery stairs & walkways



Wooster Products Inc.
"Make Every Step a Safe One"



1-800-321-4936

www.woosterproducts.com

BENKO PRODUCTS

ENGINEERED TO BE MORE

Benko Products, Inc. has been manufacturing a complete line of industrial ovens for over 30 years. Ovens offered include: batch, drum & tote warming, cabinet, walk-in, truck-in, powder coating, conveyor, preheat, curing, drying and more. Electric, steam, natural gas. Room temp to 500 degrees F.

Sahara
Hot Box

Benko Products

(440) 934-2180

email: info@benkoproducts.com

www.benkoproducts.com



OVENS AND FURNACES BY BENKO PRODUCTS, INC.

Benko Products designs and manufactures a robust line of Ovens and Furnaces for a variety of applications. Standard and custom models available. Burn Off, Batch, Curing, Drying, Conveyor and Drum Ovens. Furnaces up to 2300F.

Furnaces

Burn-off Ovens

Industrial Ovens



BENKO PRODUCTS
ENGINEERED TO BE MORE

Benko Products

(440) 934-2180

email: info@benkoproducts.com

www.benkoproducts.com

MAIN MFG - your source for hydraulic flanges and components



MAIN's Quick Reference Guide contains many standard generic drawings that helps define your special flange/adaptor needs.

Your conversations are quicker and clearer with MAIN Manufacturing's Quick Reference Guide and that "special" may be stocked at MAIN.

Many specials are part of MAIN's 7000+ inventory. If not, MAIN has the expertise, raw material, and quick turn-around time to help you get the right hydraulic flange/adaptor quickly.

Go to: Mainmanufacturing.com/quick

INTRINSICALLY SAFE ULTRASONIC SENSORS

**For Oil, Gas, Mining
and other Hazardous
Locations/Explosive
Atmospheres**

Sensing Ranges 4 in. to 18 ft.



IECEx

ANZEx

UL US

Full line of Standard
Ultrasonic Sensors
and Transducers

www.migatron.com
info@migatron.com
815-338-5800

Migatron is
ISO9001
CERTIFIED

U.S. Department of Labor
MSHA
Mine Safety & Health Administration



ADVERTISE WITH US!




See our complete suite of capabilities, all strategically designed to assist marketers in achieving their goals.

JOIN OUR WEBINAR TODAY!

Solutions and strategies to key topics that are relevant to manufacturing professionals.



ROTATING ELECTRICAL CONNECTORS



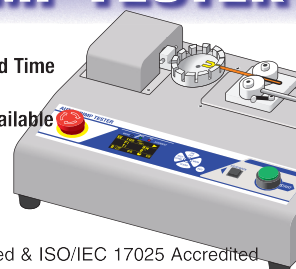
Mercotac rotating electrical connectors offer superior benefits to traditional slip rings: compact size, brushless, negligible electrical noise, signal and/or power combined in one unit, low cost, Made in USA for over 40 years. See the difference!

MERCOTAC
 sales@mercotac.com
 760-431-7723
 www.mercotac.com

AUTOMATIC WIRE CRIMP TESTER

- Destructive/Non-Destructive
- Program Force, Speed and Hold Time
- Save up to 26 Custom Setups
- Quick Change Attachments Available

800-373-9989
www.imada.com



IMADA®, Inc. ISO9001 Registered & ISO/IEC 17025 Accredited

Auto Durometer

Highly visible OLED displays and simple one button operation enable quick, consistent hardness testing.

- Highly visible OLED displays
- For Shore Scales A, B, C, D, DO, E, O, OO, and Asker C
- Peak, timer hold, and real time modes
- Auto average a series of readings.
- ISO 17025 calibration certificate traceable to NIST
- Digital & analog durometers available



866-527-4666  **Hoto Direct.com**

STRUCTURAL ADHESIVES for Metal Bonding

- High strength bonding
- For similar & dissimilar substrates
- Convenient cure schedules



+1.201.343.8983 • main@masterbond.com

www.masterbond.com

LED Stroboscope

Makes rotating or cycling objects appear stationary for inspection and measurement

ESL-200 Standard LED
 ESL-200UV Ultraviolet LED

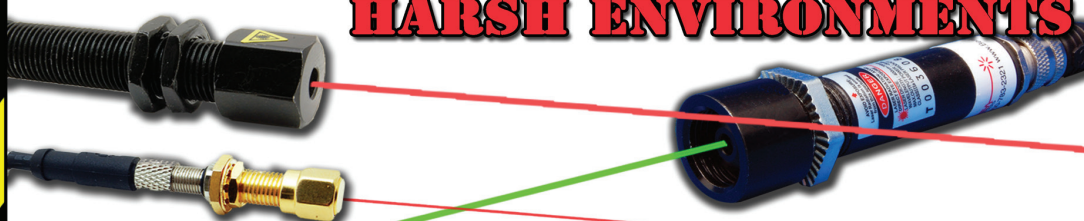
- Rugged metal housing
- Up to 150,000 fpm/rpm
- Push button x2 and ÷2
- Phase shift 0°~359° in 1° increments
- Store 9 flash rates in memory

UV Model Available!



866-527-4666  **Hoto Direct.com**

RUGGED LASERS FOR HARSH ENVIRONMENTS



Industrial Alignment Lasers for Drilling, Cutting, Welding, Riveting



(847) 238-1420
www.BEALASERS.com

BLOCK MASTER BLOCKS
 World Class Terminal Blocks

High & Medium Power Terminal Blocks

UP TO 380A 600V



Sales@BlockMaster.com
800-595-8881
BlockMaster.com



PRODUCT GUIDE

Your complete source of products, equipment, and services shown in this issue.
Need information from this issue in a hurry? Inquire online at www.nedinfo.com

ADHESIVES & FASTENING

Adhesives/Sealants/Lubricants	
Adhesives	31
Epoxies	31
Lubricants	16, 17

Assembly/Fastening

Clamps	26
Clips	33
Fasteners	26, 27
Flanges	27, 30
Hardware	3, 26, 27
Joining	26, 27
Pins	27
Washers	3

AUTOMATION

Automation Systems

Material Handling	14, 15
Packaging	14, 15

Robots

Assembly	10, 11
Automated Guided Vehicles (AGVs)	10, 11, 14, 29
Collaborative	10, 11
Material Handling	10, 11, 14, 15
Mobile	10, 11, 15
Safety Devices	14, 15
SCARA	10, 11

Sensors

Alarms	11
Sensors	25, 28, 31
Audio	28
Moisture Sensors	25
Ultrasonic Sensors	31

CONTROLS & INSTRUMENTATION

Analyzers	28
Cameras & Vision Systems	6, 29
Controllers	23
Counters & Recorders	3
Data Transmission	22
Gauges	6
Indicators	6, 11
Inspection Equipment	28, 31
Laboratory Equipment	4, 27
Analytical Instrumentation	27
Inspection & Monitoring	6
Metrology & Test Equipment	4, 27
Optical Components	27, 31
Measurement Equipment	31
Optical & Acoustic	31
Position/Speed/Accuracy	31
Temperature & Humidity	6
Meters	3, 31
Monitors	4, 6, 22
Oscilloscopes	28
Test Equipment	4, 28, 31
Timers	3
Trackers	28

ELECTRICAL & ELECTRONICS

Electrical

Cable Management	28
Energy Management	6, 23
Energy Storage	6
Inductors	27
Laser Equipment	25, 31
Meters	3
Motors	26
Optical Equipment	31
Power Supplies	25
Reels	28
Wiring	31

Electronics

Circuit Components	22, 27
Connectors	31
Control Panels	23
Speakers	11

FACILITY/OPERATIONS

Facility Maintenance

Chambers & Enclosures	26
Cleaning & Maintenance	24
Dock Equipment	14
Ladders & Platforms	JBC
Refrigeration	6
Sanitary Supplies	24
Speakers	11
Vehicles	14
Waste/Water Treatment	26, 29
Workstations	15

HVAC

Dry Coolers	25
Furnaces	30

Lighting

LED	11
-----	----

HYDRAULICS & PNEUMATICS

Fittings	27, 34
Fluids	16, 17
Pumps	23
Systems & Assemblies	27

MACHINE TOOLS & METALWORKING

Machine Tools & Equipment

Cutting Tools	32
Drills	32
Finishing Equipment	4, 22
Metal Cutting	22, 25
Laser Cutting	25
Metal Removal	32

Metalworking

Deburring Equipment	22
Welding Equipment	24

MATERIAL HANDLING & PACKAGING

Barcode & Labeling

Camera & Vision Systems	6, 29
Labeling	28
Printers	4, 28
Scanners & Readers	15

CONVEYORS

Belt	3, 10, 11, 21
Conveyor Components	10, 11, 21
Other Conveyors	JBC
Vertical	JBC

Lift Trucks

Automated Guided Vehicles (AGVs)	10, 11, 14, 29
Casters & Wheels	12, 13
Forklifts	10, 11, 15
Jacks	7
Scissor Lifts	7, JBC
Tires	10, 11
Towing & Pushing	14

Lifting/Positioning Equipment

Cranes	2, 7
Dumpers	7, 25
Hoists	2
Inverters & Upenders	7
Lift Tables	7, JBC
Monorails	2

Packaging

Bagging	14
Printers	4

Storage

Automated Storage/Retrieval	
Systems (AS/RS)	14
Picking Equipment	14, 15
Rack Protection	20
Racks	14, 21, 25
Shelving	21, 25
Storage Labeling & Organization	FC, 19

MATERIALS & CHEMICALS

Abrasives

Abrasive Locking Discs	4
------------------------	---

Chemicals & Raw Materials

Agents	24
Compounds	24

Fluids

Oils	16, 17
------	--------

Metals/Alloys

Brazing & Soldering Alloys	33
Metals, Ferrous	22, 33
Metals, Non-Ferrous	33
Stainless Steel	22

Removers & Solvents

Rust Removers	4
---------------	---

MOTION CONTROL

Bearings	6
Belts	3, 10, 11, 21
Linear Motion & Positioning	6
Motors	26
Linear Motors	26
Servomotors	26
Positioning Stages/Slides/Guides	6
Power Transmission	22

PROCESS EQUIPMENT

Air Compressors	5, 29
Air Knives	5
Air Nozzles & Guns	5
Alarms	11
Antistatic Devices	5
Cooling Equipment	25
Heating Equipment	30
Hose & Tubing	26, 28

Pipes & Fittings	34
Process Equipment	23, 26
Process Tanks	26
Pumps	23
Spraying Equipment	BC
Tubes & Fittings	34
Waste Management	26, 29

SAFETY

Electrical

Wiring Devices	31
----------------	----

Environmental Management

Cooling Towers	25
Emission Monitoring	6
Hazardous Waste Treatment	29
Sampling	26

Ergonomics

Workstations	15
--------------	----

Eye & Face Protection

Faceshields	24
Welding Protection	24

Fall Protection

Guard Rail Systems	24, 25
Other Fall Protection Equipment	20, 25
Safety Barriers	24, 25
Tread & Walkway Products	25, 30
Work Platforms	JBC

Fire Protection

Detectors & Alarms	6, 11
Gloves	4
Hose & Accessories	26, 28
Nozzles & Fittings	34

Hand & Arm Protection

Gloves	4, 24
--------	-------

Head Protection

Helmets	24
---------	----

Machine & Tool

Alarms	11
Buzzers	11
Machine Guards	24, 25
Presence Sensing	14, 15, 22
Safety Modules	23
Warning Devices	6

Protective Clothing

Flame Resistant	4
-----------------	---

Security

Access Control	25
Alarms	11
Motion Detectors	6

SOFTWARE & COMPUTERS

Computer Peripherals & Accessories

Connectors	4
------------	---

Computers

Industrial Computers & Embedded Systems	4
Mobile Computing	4, 15
Monitors & Systems	4, 22

Mobile Devices

Mobile Apps	28
Tablets	4
Wearables	15

Software

Accounting & Financial	23
Artificial Intelligence	6, 8, 9, 18, 19, 20, 21, 22, 23, 27
Communications	28
Data Storage & Management	22
Enterprise Resource Planning (ERP)	23
Equipment Management	23, 28
Industrial & Engineering	6, 23, 28
Internet of Things (IoT)	4, 6
Inventory Management	20, 21, 26
Logistics	18, 19, 20, 21, 28
Quality Assurance/Testing/Compliance	6, 23
Safety	22
Security	27
Tracking	22, 28
Warehouse Execution System (WES)	26
Warehouse Management System (WMS)	15, 26

TOOLS

Hand Tools

Brushes	32
Crimpers	31
Hammers	32
Pliers	32
Scrapers	32
Screwdrivers	32
Wrenches	32

GENERAL PRODUCTS



Non-Sparking Tools for Explosive Environments

DENIOS now offers a line of **non-sparking tools** for chemical plants, grain silos, and other locations that have a higher risk of fires or explosions. All tools are crafted from high-quality, non-ferrous materials including aluminum bronze, phosphor bronze & brass, beryllium copper, or copper-nickel metals. A full lineup of FM-approved tools that meet OSHA standards are available. Wrenches and screwdrivers, brushes and scrapers, hammers, pliers, crowbars, and various kits are available to cover a wide range of applications and industries.

DENIOS US, Inc.

More online: newequipment.com/55253442



Long-Life Helical Milling Cutter

The **LN4-11 Helical Milling Cutter** boosts productivity with high material removal rates in applications requiring a helical milling cutter in 32 to 63 mm (1 to 2 in) diameters. Adaptable to a variety of applications, it enables shops to reduce tooling inventories and costs as operators can simply change out the cutter's inserts to go from one application to the next. The tool's front and helical insert pockets also eliminate incorrect insert placement. Each cutter's Data Matrix code provides access to individual data metrics, cutting data, compatible products, and spare parts.

Seco Tools, LLC

More online: newequipment.com/55271729

AD INDEX

Advance Lifts, Incorporated	JBC
Aigner Label Holder Corp.	FC, 19*
Air Technical Industries	7
Ancra Cargo	20*
Arnold Machinery	8a-b*
Benko Products Inc.	30
Boker's Inc.	3
COXREELS	28
Creform Corporation	29
Dura-Belt	3, 21*
EMH Incorporated	IFC
ENM Company	3
EXAIR LLC	5
Floyd Bell Inc.	11
Hamilton Caster & Mfg. Co.	12-13
IMADA	31
Jesco Industries Inc.	25
Lubriplate Lubricants Company	16-17
MAIN Manufacturing Products	27, 30
Master Bond Inc.	31
Mercotac Inc.	31
Migatron Corp.	30
Ridg-U-Rak	21*
Spraying Systems	BC
Transducers USA	31
Tri-Mer Corporation	26
Uline	24
Wooster Products Inc.	25, 30

Every effort is made to ensure the accuracy of this index. However, the publisher cannot be held responsible for errors or omissions.

*This ad is appearing demographically.
*Indicates ad is in the MHL Section

2 Summit Park Drive, Suite 300
Independence, OH 44131
T: (234) 466-0200
www.newequipment.com

John DiPaola
Vice President & Group Publisher
jdipaola@endeavorb2b.com

Edward Bartlett
Production Manager

CIRCULATION CUSTOMER SERVICE
newequipmentdigest@omeda.com
(877) 382-9187

ADVERTISING SALES
U.S. & Canada

Joe DiNardo
(440) 487-8001
jdinardo@endeavorb2b.com

INTERNATIONAL

(Italy)

Diego Casiraghi
Casiraghi Global Media SRL
diego@casiraghi-adv.com

(Taiwan)

Charles Yang
Lotus Business Information Co.
medianet@ms13.hinet.net

(Japan)

Shigenori Negatomo
Pacific Business
shigenori.nagatomo@pacific-business.com

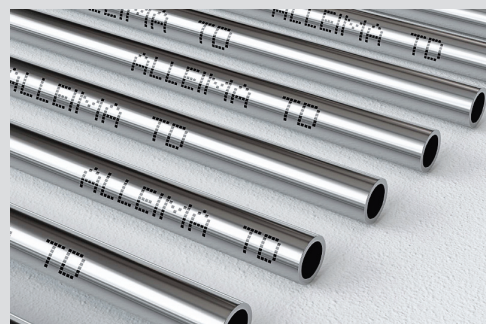
(China)

Adonis Mack
ACT International
adonism@actintl.com.hk

For a Media Kit, visit:
www.newequipment.com

Publisher's Notice: We assume no responsibility for the validity of claims in descriptions of new and improved products furnished to New Equipment Digest.

FROM THE COVER



Alloy for Extreme Temperatures

Alleima TD is a high-temperature material solution for the heat treatment industry. The product ensures consistent performance for mineral insulated cable, measurements, and heating cables, even at extreme temperatures up to 2,282°F (1,250°C).

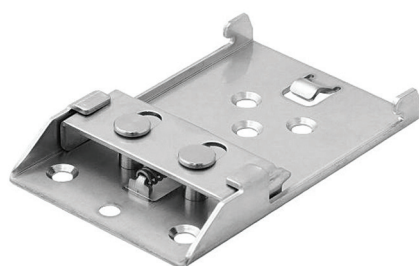
The nickel-chromium alloy tube features 22% chromium and 3% molybdenum to offer reliable corrosion resistance at high temperatures and reduce the risk of oxidation, creep, and cracking.

Industries with a focus on the production of automobiles, aluminum, gas turbines, and aerospace engines are known for their harsh environments that put high demand on surrounding materials in production. Alleima TD ensures consistent performance in elevated temperatures minimizing corrosion and contamination of the cable insulation.

Alleima TD is perfect for industries where precision, reliability, and safety are paramount, including thermocouple sheathing, pyrometers, and heat tracing cables, where temperature control is important.

Alleima

More online: newequipment.com/55265273



Reimagined DIN-Rail Clips

Antaira's **patented DIN-Rail clips** use a reimagined mounting design for a more secure attachment for Ethernet switches and routers onto any 35 mm (1 in) metal rail. Replacing the standard clips that come with its devices, the new clips have a spring-loaded latch that enables easy snap-on attachment and can be removed just by lifting and releasing the clasp. Two packages are available to upgrade existing DIN-Rail clips: The DIN-RAIL-KIT-2, an ultra-secure solution that fits all LNX, LMX, LNP, and LMP switch families, and the tool-free "press-and-click" DIN-RAIL-KIT-3.

Antaira Technologies, LLC

More online: newequipment.com/55271708



No Scanning, No Waiting, No Kidding

Manufacturing professionals are constantly evaluating automation technologies that promise efficiency gains. The retail sector's struggles with checkout automation offer valuable lessons about innovation implementation that translate across industries.

I've been on both sides of the checkout counter. Years ago, I worked as a grocery cashier before modern scanning technology existed. These days, I'm a self-checkout convert simply because it's faster than waiting on a cashier, especially since modern checkout lanes aren't designed for customers to help with bagging.

Even with my checkout efficiency, Walmart trips still took at least an hour. So when I heard about "Scan & Go," I was intrigued. After two frustrating months with Walmart's version, I gave up. The \$14 monthly fee was just the start—I had to use my phone instead of a store scanner, deal with an app that couldn't reliably read barcodes, and endure random security checks that left employees confused. Ironically, "Scan & Go" increased my time in the store.

This experience made me curious about Amazon's more ambitious "Just Walk Out" stores that promised truly automated shopping: Enter, grab what you need, and leave. No scanning whatsoever.

Well, Amazon recently abandoned this model due to unsustainable technology costs, relying on human reviewers despite claims of AI automation, limited deployment across half of its 52 stores, and many shoppers were uncomfortable with the tracking involved. Instead, Amazon retreated to "Dash Carts" (its version of "Scan & Go"), suggesting automated grocery shopping was just another fantasy, but the industry keeps trying.

At NRF 2025 this January, European company Sensei unveiled yet another approach to autonomous supermarkets with "Real-time Virtual Basket Technology" that promises no scanning or checkout lines.

What sets Sensei apart is its proprietary system that uses computer vision, machine learning, and advanced sensors to achieve a claimed "99% accuracy in tracking product interactions". It has already launched a 13,000+ square-foot autonomous supermarket in Portugal that doesn't rely on apps, store cards, or subscriptions, including a large product selection and frictionless checkout.

Is this truly groundbreaking? Not in concept, but maybe in execution. Success will depend on whether:

- Its technology actually delivers that 99% accuracy in daily operation
- The cost structure makes sense (even Walmart charges \$14 monthly for partial automation)
- Shoppers see genuine benefits beyond the novelty

As you evaluate automation opportunities in your own facilities, retail's cautious progress reminds us that technological capability alone doesn't guarantee successful implementation. The best innovations deliver real, measurable advantages while addressing genuine pain points rather than creating new ones. Sensei's approach seems promising, but like many retail innovations, I'll believe it when I see it in my local grocery store.

— **Laura Davis**, Editor-in-Chief

Selecting the Perfect Push-to-Connect Fitting: 10 Key Factors

By Michael Nick



FLARE



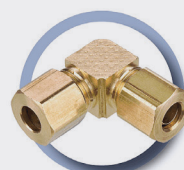
HOSE BARB



PUSH-TO CONNECT



PIPE



COMPRESSION

When choosing a fitting, ease of installation is a key factor to consider to reduce labor time on the job, which is why push-to-connect fittings (also referred to as quick disconnects, quick couplings, push-to-connect/push-on/push-fit, plug-in fittings, quick manifolds, and quick release couplings) have become popular over the past 20+ years.

Some experts in the industry estimate the labor reduction to be as high as 90% when using push-to-connect fittings as no tools are required. However, not all push-to-connect fittings are the same, and it's important to choose the right one to ensure optimal performance and avoid premature failures.

1. Remember STAMPED

Choosing the right fitting comes down to what's known as the STAMP(ED) method of selection. For years, the acronym was known as STAMP. The "ED" was added in recent years where "E" refers to ends (thread type) and "D" refers to delivery.

The core part of the acronym stands for: Size, Temperature, Application, Material/Media, and Pressure. STAMPED is an industry-wide practice used by professionals as a guide when replacing or determining specs for new hydraulic or pneumatic hoses and fittings. Following the STAMPED guidelines will help ensure you install the best push-to-connect fitting for your application.

2. Size Considerations

When calculating size, consider the inside and outside diameter (ID & OD) of the fitting.

The ID must be able to keep pressure loss to a minimum and maintain adequate flow while avoiding damage to the system as a result of heat generation or excessive turbulence. The ID, flow rate, and design of the fitting will determine the fluid velocity through the fitting. If the fitting is too small, you may experience a reduced flow rate and loss of pressure, as well as additional noise and increased temperatures. If the flow and pressure remain restricted for too long, the system could be damaged.

3. Temperature Considerations

There are two different variables when evaluating temperature: The temperature of the material conveyed and environmental temperature.

It's important to choose a fitting that's appropriate for the temperatures to not cause damage. Fittings will have a longer service life if they're not continually used at working pressures or temperatures beyond manufacturer specifications.

Temperature can have a significant impact on the overall working pressure because maximum working pressures will decrease as temperatures increase. When choosing a fitting, keep in mind that push-to-connect fittings are often rated for average, minimum, and maximum operating temperatures.

4. Application Considerations

In this case, application refers to conditions in which the push-to-connect fitting will be used, including environment, industry, equipment type, cycle life, indoor/outdoor use, maintenance requirements, and the potential for exceeding the maximum pressure ratings. You should take into consideration anything that could compromise the life of the fitting, whether it's aggressive chemicals, abrasion, vibration, or extreme temperatures.

5. Material/Media Considerations

Typical media include fluids, inert gas, chemicals, and compressed air which are commonly used in pneumatic and hydraulic processes. You should pay special attention to applications that use toxic or caustic media to ensure that the materials of your push-to-connect fitting (metal, rubber, plastic, composite, nickel/electroless brass, or stainless steel) are compatible and survive the aggressiveness of the media regardless of prolonged contact or contact under extreme pressures or temperatures.

6. Pressure Considerations

Pressure ratings for push-to-connect fittings should be equal to or greater than the system pressure. Pressure

spikes, even ones that occur for short intervals, can shorten the life of the fitting if they extend beyond the maximum working pressure of the fitting. Remember that temperatures inside and outside the system can affect the pressures within the systems and should be considered when evaluating the fitting's ability to withstand pressures during normal operating conditions, as well as pressure spikes.

7. Ends Considerations

When considering the various ends of a fitting, think about the coupling design, style, type, and any relevant safety features. Remember that the ends on either side of the fitting are not always the same. For example, on one side there may be a compression end and the other side may have a bar. Other common thread types include hose barb, gladhand, hose clamp, and jubilee clip, among others. The pressures and volume flow demand of the system will dictate the best thread types and connection methods.

The area where the hose and fitting meet is often the weakest point and most vulnerable to failure and leaks, so choosing the right end is important. The integrity of the connection can be strengthened by adding a safety locking mechanism.

8. Delivery Considerations

The delivery phase includes multiple steps, including testing, packaging, and delivery. Various industry standards and relevant certifications often dictate how this phase should be addressed.

9. Improvements in Push-to-Connect Offerings

Parker Hannifin first developed and patented the original push-to-connect technology 30+ years ago when most push-to-connect fittings were made from thermoplastics. Since then there have been a number of improvements, including grab rings that enhance tube retention and newer versions that have higher tube tension and hold strength. Some of the newer designs are even faster and easier to install than the original styles.

Advanced materials, such as nylon, and value-added engineering have created lighter-weight fittings.

As a result of stricter regulations and certification requirements in recent years, there's an increased focus on flame retardance. This has opened the door to the use of glass-filled nylon which is known for providing greater flame resistance. Options have been developed to handle higher pressures, and today, Parker offers the highest pressure rating of up to 290 psi for compressed air and up to 435 psi with stainless tubing.

10. Alternatives to Push-to-Connect Technologies

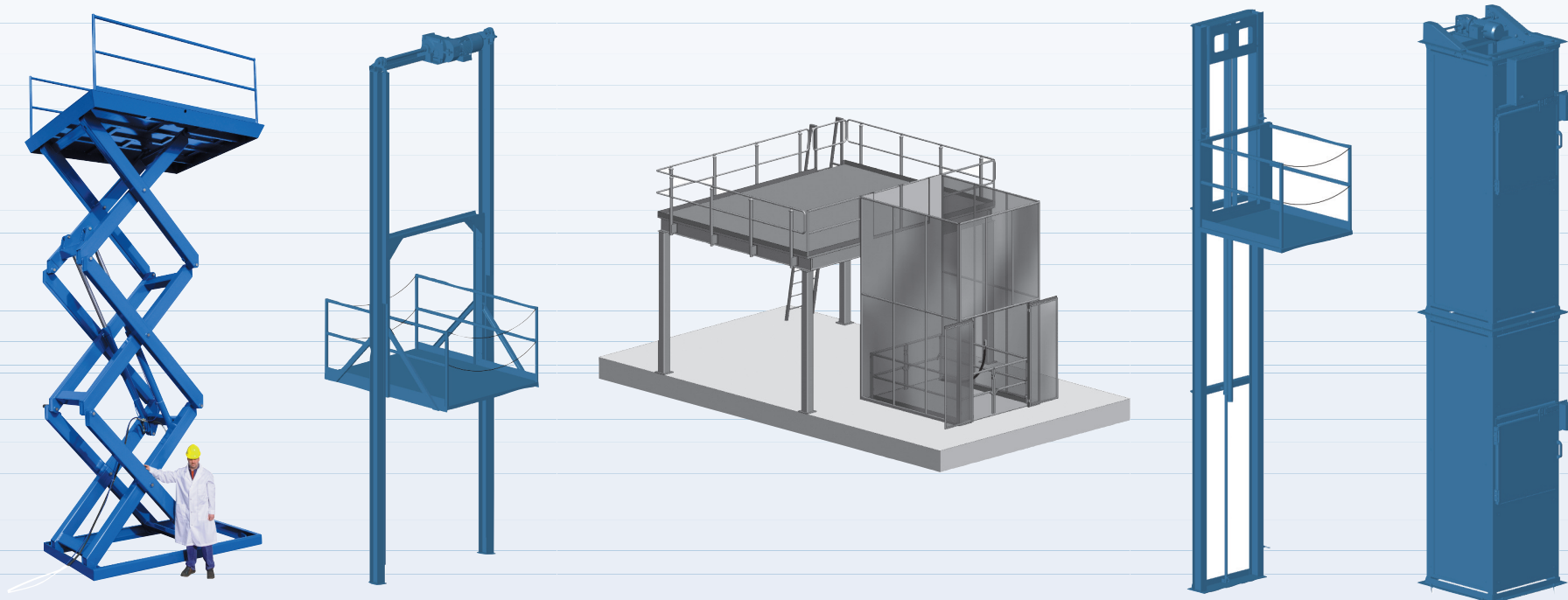
There are a few applications where push-to-connect fittings are not recommended. For example, the Department of Transportation insists that air brake fittings for vehicles must be copper-based. In addition, push-to-connect fittings should not be used with propane, gas, or other explosive media. Another vulnerability is tuber tension which causes fitting failures at higher pressures as the tubing can pull out and get soft at higher temperatures and pressures. **NEED**

Michael Nick is a product sales manager for Parker Hannifin.



ADVANCE LIFTS®

MEZZANINE ACCESS LIFTS



- ▶ Rider Scissors Lifts compliant with MH29.1:2014 as cited by the 2015 International Building Code
- ▶ Non-Rider Scissors Lifts compliant with MH29.1:2014 as cited by the 2015 International Building Code
- ▶ VRC's (vertical reciprocating conveyors) compliant with ASME B20.1 & The Application Guidelines for Vertical Reciprocating Conveyors
- ▶ Package Lifts which are free-standing, smaller & faster VRC's

**WE OFFER A FULL ARRAY OF CHOICES
FOR EFFICIENTLY SERVICING MEZZANINES**



ISO 9001:2015
Certified



WHITE PAPER, TWO (2) VIDEOS

AVAILABLE AT advancemezzaninelifts.com



1-800-843-3625



Spraying Systems Co.®

IT STARTS WITH A DROP PUTTING SUSTAINABILITY INTO PRACTICE

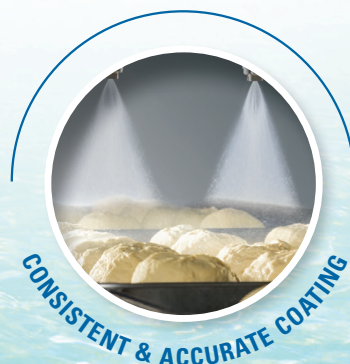
Since 1937, Spraying Systems Co. has been helping manufacturers around the world optimize their efficiencies, enhance operational performance and meet their sustainability goals. We know that even a small change can have a big impact – on the environment AND the bottom line.



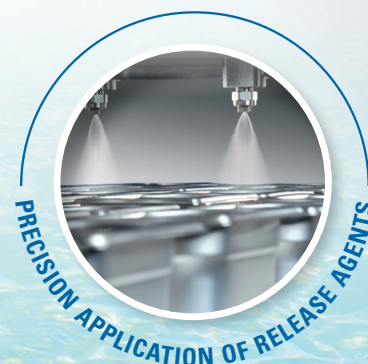
45
MILLION GALLONS
OF WATER SAVED



412
MTCO2 OF GHG
EMISSIONS ELIMINATED



\$74K
IN ENERGY
SAVINGS

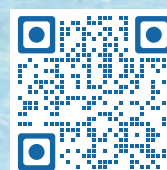


8.5
WEEKS
REALIZED ROI

Average outcomes of Sustainability Assessments

Schedule your no-obligation, custom Sustainability Assessment
or visit our website to learn more about ***SprayEASE*** – a new suite of service products designed to help you meet your sustainability goals, without draining your resources.

MAKE EVERY DROP COUNT®



spray.com/sustainability | 1.800.95.SPRAY